



**Australian  
Bureau of  
Statistics**

**MARCH  
QUARTER 1994**

**TOURIST  
ACCOMMODATION**

**QUEENSLAND**

**Catalogue No. 8635.3**



## TOURIST ACCOMMODATION, QUEENSLAND, MARCH QUARTER 1994

### MAIN FEATURES

MARCH QUARTER 1994  
COMPARED WITH  
MARCH QUARTER 1993

#### HOTELS, MOTELS AND GUEST HOUSES

- Rooms available increased by 0.3 per cent from 39,935 to 40,062 and bed spaces increased by 0.4 per cent to 121,758.
- Room nights occupied increased by 6.3 per cent from 2,013,313 to 2,140,797 overall with licensed hotels recording an increase of 8.9 per cent and motels and guest houses an increase of 4.0 per cent.
- The room occupancy rate overall rose from 56.0 per cent to 59.4 per cent, with Cairns City and Gold Coast City recording 76.8 per cent and 75.1 per cent respectively. For five star rated establishments, the room occupancy rate was 76.4 per cent compared with 66.5 per cent for four star rated establishments and 59.0 per cent for three star rated establishments.
- Guest nights increased by 8.1 per cent from 3,760,643 to 4,067,005 and the bed occupancy rate increased from 34.4 per cent to 37.2 per cent.
- Guest arrivals increased by 11.3 per cent from 1,506,506 to 1,677,147 while the average length of stay decreased from 2.5 days to 2.4 days. For five star rated establishments, average length of stay decreased from 3.2 days to 3.1 days and, for four star rated establishments, decreased from 3.0 days to 2.6 days.
- Takings from accommodation increased by 14.1 per cent from \$167.0m to \$190.6m while average takings per room night occupied increased from \$83 to \$89.

#### HOLIDAY FLATS, UNITS AND HOUSES

- The number of units, etc. available for short-term letting increased by 3.3 per cent from 15,797 to 16,321 while unit nights occupied increased by 6.4 per cent from 810,823 to 862,883.
- The unit occupancy rate increased from 57.0 per cent to 58.8 per cent.
- Unit lettings increased by 7.9 per cent from 124,399 to 134,177 but average length of stay decreased marginally from 6.5 days to 6.4 days.
- Accommodation takings increased by 12.6 per cent from \$49.5m to \$55.7m and the average takings per unit night occupied increased by 5.8 per cent from \$61 to \$65.

#### CARAVAN PARKS

- Caravan park capacity available decreased by 0.5 per cent from 55,308 to 55,054 powered and unpowered sites and cabins, etc. of which 16,428 sites, etc. (29.8 per cent) were occupied by long-term residents, 1,172 sites (2.1 per cent) were permanently reserved but only casually occupied by their tenants and an average of 6,122 sites (11.1 per cent) were occupied by other short-term guests.
- Site nights occupied increased by 1.3 per cent from 2,108,374 to 2,134,982 and the site occupancy rate increased from 42.4 per cent to 43.1 per cent.
- Takings from accommodation rose by 6.7 per cent from \$20.5m to \$21.9m.

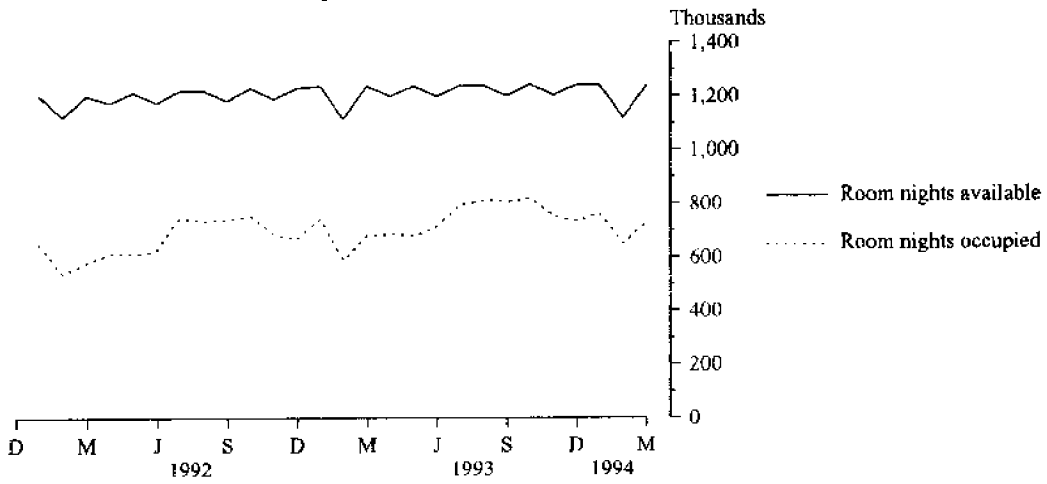
#### VISITOR HOSTELS

- Bed spaces available increased by 4.7 per cent from 7,860 to 8,233 while guest nights sold increased by 6.6 per cent from 318,291 to 339,321.
- The bed occupancy rate thus increased from 45.2 per cent to 46.3 per cent.
- Guest arrivals increased by 15.6 per cent from 117,488 to 135,787 but average length of stay decreased from 2.7 to 2.5 days.
- Accommodation takings increased by 6.5 per cent from \$3.6m to \$3.9m while average takings per guest night remained at \$11.

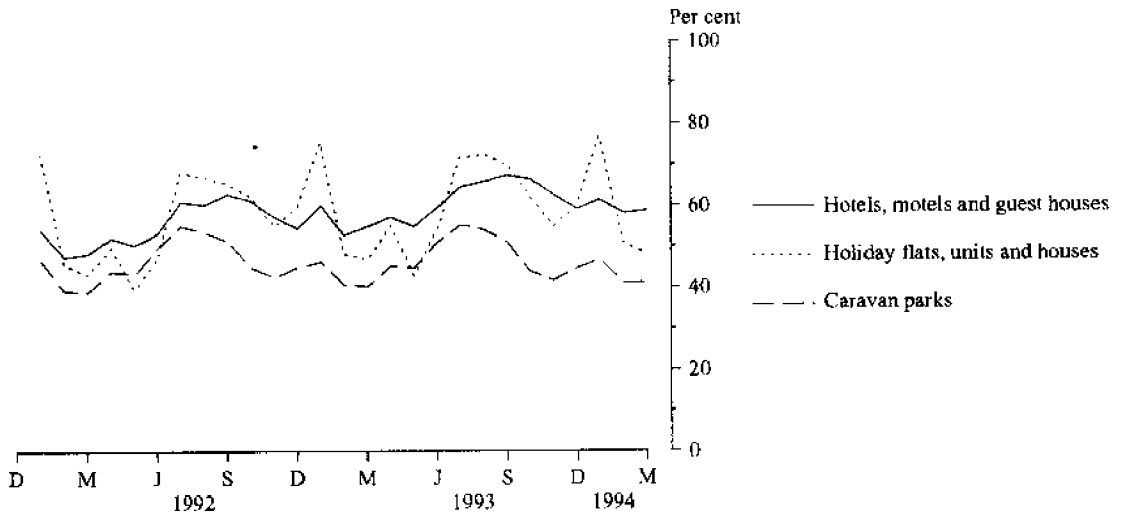
### INQUIRIES

- *for further information about statistics in this publication and the availability of related unpublished statistics, contact Sally Barrett on 008 077285 or any ABS office.*
- *for information about other ABS statistics and services, refer to the back page of this publication.*

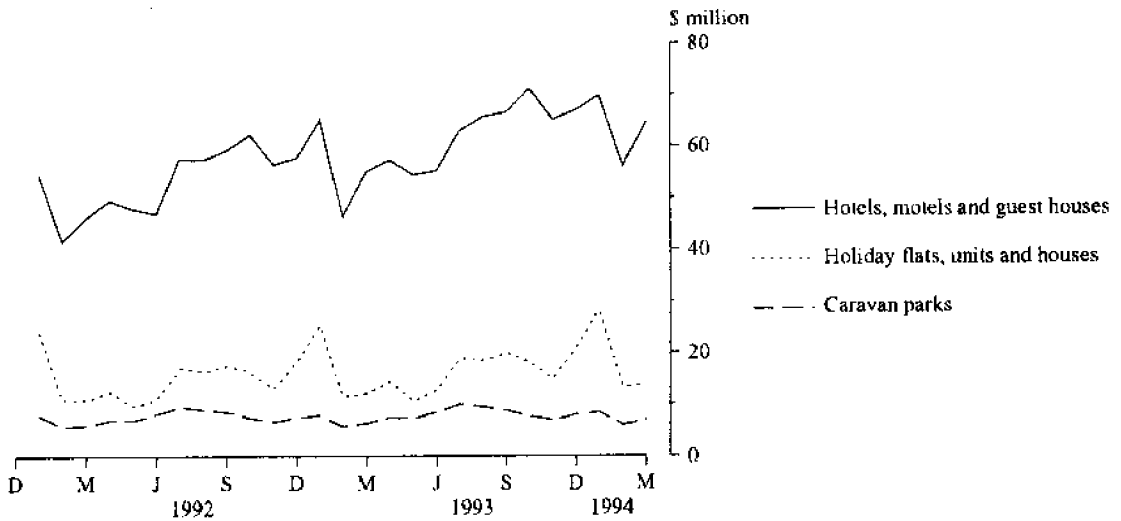
**MONTHLY ROOM NIGHTS AVAILABLE AND OCCUPIED:  
HOTELS, MOTELS AND GUEST HOUSES,  
QUEENSLAND**



**MONTHLY OCCUPANCY RATES,  
QUEENSLAND**



**MONTHLY TAKINGS FROM ACCOMMODATION,  
QUEENSLAND**



## CONTENTS

<i>Table</i>		<i>Page</i>
-	Main features	1
-	Diagrams	2
1	Summary of hotels, motels and guest houses with facilities, Queensland	4
2	Summary of caravan parks, Queensland	5
3	Summary of holiday flats, units and houses, Queensland	6
4	Summary of visitor hostels, Queensland	6
5	Hotels, motels and guest houses with facilities by star grading, Queensland	7
6	Hotels, motels and guest houses with facilities by statistical division, Queensland	8
7	Hotels, motels and guest houses with facilities: Statistical divisions and selected subdivisions and statistical local areas, Queensland	12
8	Holiday flats, units and houses by statistical division, Queensland	16
9	Holiday flats, units and houses: Statistical divisions and selected subdivisions and statistical local areas, Queensland	18
10	Caravan parks by statistical division, Queensland	20
11	Caravan parks: Statistical divisions and selected subdivisions and statistical local areas, Queensland	24
12	Visitor hostels by statistical division, Queensland	28
-	Explanatory Notes	29
-	Time series statistics available	32
-	Reference maps -- statistical divisions and subdivisions of Queensland	34

TABLE 1 — SUMMARY OF HOTELS, MOTELS AND GUEST HOUSES WITH FACILITIES, QUEENSLAND (a)

Particulars	Unit	Quarter ended				Year ended			
		December 1992	March 1993	June 1993	September 1993	December 1993	March 1994	March 1993	March 1994
<b>LICENSED HOTELS WITH FACILITIES</b>									
Establishments	No.	281	281	279	276	262	258	..	..
Guest rooms	No.	17,670	17,845	17,929	17,968	17,917	17,914	..	..
Bed spaces	No.	51,768	52,691	53,158	53,271	53,013	53,344	..	..
Employment (persons)	No.	20,101	19,163	18,835	20,346	21,104	20,456	..	..
Room nights occupied	No.	980,061	944,074	941,762	1,066,265	1,122,871	1,028,503	3,679,472	4,159,401
Room occupancy rate	per cent	60.6	58.8	57.7	64.5	68.1	63.8	57.5	63.6
Guest nights	No.	1,818,636	1,727,797	1,697,025	1,967,630	2,086,779	1,943,909	6,712,253	7,695,343
Bed occupancy rate	per cent	38.5	36.4	35.1	40.1	42.8	40.5	35.3	39.6
Guest arrivals	No.	615,969	577,510	581,526	649,671	730,049	686,634	2,363,057	2,647,880
Average length of stay	days	3.0	3.0	2.9	3.0	2.9	2.8	2.8	2.9
Takings from accommodation	\$'000	108,343	102,137	100,195	113,608	129,142	119,446	395,712	462,392
<b>MOTELS AND GUEST HOUSES WITH FACILITIES</b>									
Establishments	No.	833	840	842	840	836	835	..	..
Guest rooms	No.	22,111	22,090	22,036	22,056	22,208	22,148	..	..
Bed spaces	No.	68,722	68,641	68,245	68,210	68,551	68,414	..	..
Employment (persons)	No.	8,241	8,051	8,288	8,373	8,417	8,310	..	..
Room nights occupied	No.	1,124,109	1,069,239	1,134,132	1,353,128	1,187,846	1,112,294	4,505,970	4,787,400
Room occupancy rate	per cent	55.3	53.8	56.6	66.8	58.2	55.9	56.1	59.4
Guest nights	No.	2,082,783	2,032,846	2,102,229	2,557,788	2,231,183	2,123,096	8,395,341	9,014,296
Bed occupancy rate	per cent	32.9	32.9	33.9	40.8	35.4	34.5	33.7	36.2
Guest arrivals	No.	986,764	928,996	1,037,764	1,238,728	1,066,888	990,513	3,991,047	4,333,893
Average length of stay	days	2.1	2.2	2.0	2.1	2.1	2.1	2.1	2.1
Takings from accommodation	\$'000	68,229	64,910	67,136	81,890	74,229	71,158	267,113	294,413
<b>TOTAL HOTELS, MOTELS AND GUEST HOUSES WITH FACILITIES</b>									
Establishments	No.	1,114	1,121	1,121	1,116	1,098	1,093	..	..
Guest rooms	No.	39,781	39,935	39,965	40,024	40,125	40,062	..	..
Bed spaces	No.	120,490	121,332	121,403	121,481	121,564	121,758	..	..
Employment (persons)	No.	28,342	27,214	27,123	28,719	29,521	28,766	..	..
Room nights occupied	No.	2,104,170	2,013,313	2,075,894	2,419,393	2,310,717	2,140,797	8,185,442	8,946,801
Room occupancy rate	per cent	57.6	56.0	57.1	65.7	62.6	59.4	56.7	61.3
Guest nights	No.	3,901,419	3,760,643	3,799,254	4,525,418	4,317,962	4,067,005	15,107,594	16,709,639
Bed occupancy rate	per cent	35.3	34.4	34.4	40.5	38.6	37.2	34.4	37.7
Guest arrivals	No.	1,602,733	1,506,506	1,619,290	1,888,399	1,796,937	1,677,147	6,354,104	6,981,773
Average length of stay	days	2.4	2.5	2.3	2.4	2.4	2.4	2.4	2.4
Takings from accommodation	\$'000	176,572	167,047	167,331	195,498	203,370	190,605	662,825	756,805

(a) From December quarter 1993, establishments with fewer than 5 rooms have been formally excluded from the scope of this collection. See Explanatory Note 2 (page 29).

TABLE 2 — SUMMARY OF CARAVAN PARKS, QUEENSLAND

Particulars	Unit	Quarter ended				Year ended		March 1993	March 1994
		December 1992	March 1993	June 1993	September 1993	December 1993	March 1994		
<b>SHORT-TERM CARAVAN PARKS</b>									
Establishments	No.	226	225	226	226	231	232	..	..
Capacity									
On-site vans	No.	1,157	1,132	1,128	1,094	1,080	1,062	..	..
Other powered sites	No.	10,631	10,567	10,636	10,623	10,792	10,831	..	..
Unpowered sites	No.	8,492	8,492	8,478	8,304	8,390	8,261	..	..
Cabins, etc.	No.	1,083	1,116	1,158	1,204	1,207	1,243	..	..
<i>Total capacity</i>	<i>No.</i>	<i>21,363</i>	<i>21,307</i>	<i>21,400</i>	<i>21,225</i>	<i>21,469</i>	<i>21,397</i>	..	..
Sites occupied by long-term guests	No.	1,795	1,819	1,897	1,789	1,752	1,769	..	..
Other sites permanently reserved (a)	No.	515	546	611	691	684	675	..	..
Employment (persons)	No.	774	738	777	794	811	806	..	..
Site nights occupied (a)	No.	547,947	491,297	634,893	869,992	565,353	527,427	(a)	2,597,665
Site occupancy rate (a)	per cent	28.0	25.6	32.7	44.6	28.7	27.5	(a)	33.4
Takings from accommodation	\$'000	6,230	5,734	7,485	10,295	6,953	6,285	30,047	31,018
<b>LONG-TERM CARAVAN PARKS</b>									
Establishments	No.	399	401	400	400	398	397	..	..
Capacity									
On-site vans	No.	4,613	4,586	4,604	4,736	4,728	4,763	..	..
Other powered sites	No.	21,817	21,924	21,866	21,991	21,835	21,424	..	..
Unpowered sites	No.	5,235	5,277	5,386	5,546	5,413	5,162	..	..
Cabins, etc.	No.	2,194	2,214	2,230	2,267	2,237	2,308	..	..
<i>Total capacity</i>	<i>No.</i>	<i>33,859</i>	<i>34,001</i>	<i>34,086</i>	<i>34,540</i>	<i>34,213</i>	<i>33,657</i>	..	..
Sites occupied by long-term guests	No.	14,870	15,119	15,148	15,348	14,687	14,659	..	..
Other sites permanently reserved (a)	No.	676	657	630	552	502	497	..	..
Employment (persons)	No.	1,428	1,434	1,412	1,392	1,372	1,458	..	..
Site nights occupied (a)	No.	1,688,021	1,617,077	1,730,416	1,870,442	1,659,131	1,607,555	(a)	6,867,544
Site occupancy rate (a)	per cent	54.2	52.8	55.8	58.9	52.7	53.1	(a)	55.1
Takings from accommodation	\$'000	15,642	14,763	16,235	18,219	15,979	15,594	62,238	66,026
<b>TOTAL CARAVAN PARKS</b>									
Establishments	No.	625	626	626	626	629	629	..	..
Capacity									
On-site vans	No.	5,770	5,718	5,732	5,830	5,808	5,825	..	..
Other powered sites	No.	32,448	32,491	32,502	32,614	32,627	32,255	..	..
Unpowered sites	No.	13,727	13,769	13,864	13,850	13,803	13,423	..	..
Cabins, etc.	No.	3,277	3,330	3,388	3,471	3,444	3,551	..	..
<i>Total capacity</i>	<i>No.</i>	<i>55,222</i>	<i>55,308</i>	<i>55,486</i>	<i>55,765</i>	<i>55,682</i>	<i>55,054</i>	..	..
Sites occupied by long-term guests	No.	16,665	16,938	17,045	17,137	16,439	16,428	..	..
Other sites permanently reserved (a)	No.	1,191	1,203	1,241	1,243	1,186	1,172	..	..
Employment (persons)	No.	2,202	2,172	2,189	2,186	2,183	2,264	..	..
Site nights occupied (a)	No.	2,235,968	2,108,374	2,365,309	2,740,434	2,224,484	2,134,982	(a)	9,465,209
Site occupancy rate (a)	per cent	44.1	42.4	46.9	53.5	43.4	43.1	(a)	46.8
Takings from accommodation	\$'000	21,873	20,497	23,720	28,515	22,931	21,878	92,285	97,044

(a) From September quarter 1992, caravan park sites, etc. permanently reserved but only casually occupied by their tenants have been recorded continuously as site nights occupied irrespective of whether the tenants of individual sites were in residence on any particular night. See Explanatory Notes 11 and 14. Occupancy measures from September quarter 1992 are therefore not comparable with those from previous quarters.

TABLE 3 — SUMMARY OF HOLIDAY FLATS, UNITS AND HOUSES, QUEENSLAND

Particulars	Unit	Quarter ended				Year ended			
		December 1992	March 1993	June 1993	September 1993	December 1993	March 1994	March 1993	March 1994
Letting entities	No.	587	592	591	594	611	605	..	..
Flats, units and houses	No.	3,354	3,451	3,371	3,405	3,512	3,497	..	..
Single bedroom	No.	12,372	12,346	12,431	12,809	13,096	12,824	..	..
Multiple bedroom	No.	15,726	15,797	15,802	16,214	16,608	16,321	..	..
Total flats, units and houses	No.	15,726	15,797	15,802	16,214	16,608	16,321	..	..
Bed spaces	No.	63,254	63,089	63,683	65,054	66,574	65,990	..	..
Employment (persons) (a)	No.	1,960	1,968	1,961	2,031	2,160	2,125	..	..
Unit nights occupied	No.	852,533	810,823	726,634	1,062,658	901,951	862,883	3,262,838	3,554,126
Unit occupancy rate	per cent	59.0	57.0	50.5	71.3	59.1	58.8	57.1	60.0
Unit lettings	No.	136,676	124,399	117,300	149,742	147,452	134,177	494,423	548,671
Average length of stay	days	6.2	6.5	6.2	7.1	6.1	6.4	6.6	6.5
Takings from accommodation	\$'000	47,736	49,462	38,248	57,485	54,078	55,714	181,527	205,525

(a) Employment numbers exclude real estate agents and their employees.

TABLE 4 — SUMMARY OF VISITOR HOSTELS, QUEENSLAND

Particulars	Unit	Quarter ended				Year ended			
		December 1992	March 1993	June 1993	September 1993	December 1993	March 1994	March 1993	March 1994
Establishments	No.	121	121	115	121	118	122	..	..
Bed spaces	No.	7,862	7,860	7,548	8,000	7,863	8,233	..	..
Employment (persons)	No.	549	526	505	552	543	550	..	..
Guest nights	No.	354,007	318,291	329,278	400,057	339,234	339,321	1,438,067	1,407,890
Bed occupancy rate	per cent	49.0	45.2	47.9	54.4	47.1	46.3	50.0	49.0
Guest arrivals	No.	126,689	117,488	123,535	156,127	124,599	135,787	535,329	540,048
Average length of stay	days	2.8	2.7	2.7	2.6	2.7	2.5	2.7	2.6
Takings from accommodation	\$'000	3,945	3,635	3,787	4,542	3,782	3,871	16,042	15,982



TABLE 5 — HOTELS, MOTELS AND GUEST HOUSES WITH FACILITIES BY STAR GRADING, QUEENSLAND (a)

Particulars	Star grading						Total
	1	2	3	4	5	Ungraded	
<b>ESTABLISHMENTS, CAPACITY AND EMPLOYMENT</b>							
<i>March quarter 1993—</i>							
Establishments	31	461	381	47	17	184	1,121
Guest rooms	466	8,679	14,285	7,281	5,204	4,020	39,935
Bed spaces	1,306	26,122	43,374	23,183	15,012	12,335	121,332
Employment (persons)	242	3,852	6,847	5,143	7,983	3,147	27,214
<i>March quarter 1994—</i>							
Establishments	17	455	404	54	18	145	1,093
Guest rooms	277	8,547	15,328	7,829	5,533	2,548	40,062
Bed spaces	809	25,766	46,893	24,665	16,188	7,437	121,758
Employment (persons)	126	3,739	7,910	6,078	9,097	1,816	28,766
<b>ROOM NIGHTS OCCUPIED</b>							
<i>March quarter 1993</i>	<i>14,484</i>	<i>356,649</i>	<i>721,545</i>	<i>426,749</i>	<i>319,730</i>	<i>174,156</i>	<i>2,013,313</i>
<i>1994—</i>							
January	3,158	137,868	292,477	161,044	129,851	37,281	761,679
February	2,751	105,531	245,942	143,580	120,359	32,324	650,487
March	2,650	120,622	275,609	163,837	130,186	35,727	728,631
<i>March quarter 1994</i>	<i>8,559</i>	<i>364,021</i>	<i>814,028</i>	<i>468,461</i>	<i>380,396</i>	<i>105,332</i>	<i>2,140,797</i>
<b>ROOM OCCUPANCY RATES (per cent)</b>							
<i>March quarter 1993</i>	<i>34.5</i>	<i>45.7</i>	<i>56.2</i>	<i>65.1</i>	<i>68.3</i>	<i>48.2</i>	<i>56.0</i>
<i>1994—</i>							
January	36.8	52.0	61.6	66.4	75.7	47.2	61.3
February	35.5	44.4	57.4	65.5	77.7	45.3	58.1
March	30.9	45.8	58.0	67.5	75.9	45.4	58.8
<i>March quarter 1994</i>	<i>34.3</i>	<i>47.5</i>	<i>59.0</i>	<i>66.5</i>	<i>76.4</i>	<i>46.0</i>	<i>59.4</i>
<b>GUEST NIGHTS</b>							
<i>March quarter 1993</i>	<i>24,550</i>	<i>666,316</i>	<i>1,354,602</i>	<i>801,879</i>	<i>564,312</i>	<i>348,984</i>	<i>3,760,643</i>
<i>1994—</i>							
January	5,930	282,181	632,853	363,200	246,032	79,294	1,609,490
February	4,539	181,133	436,391	262,186	211,250	59,954	1,155,453
March	4,037	207,419	489,808	308,243	227,250	65,305	1,302,062
<i>March quarter 1994</i>	<i>14,506</i>	<i>670,733</i>	<i>1,559,052</i>	<i>933,629</i>	<i>684,532</i>	<i>204,553</i>	<i>4,067,005</i>
<b>BED OCCUPANCY RATES (per cent)</b>							
<i>March quarter 1993</i>	<i>20.9</i>	<i>28.3</i>	<i>34.7</i>	<i>38.4</i>	<i>41.5</i>	<i>31.5</i>	<i>34.4</i>
<i>1994—</i>							
January	23.6	35.3	43.5	47.5	49.0	34.4	42.6
February	20.0	25.2	33.3	38.0	46.6	28.8	34.0
March	16.1	26.1	33.7	40.4	45.3	28.4	34.6
<i>March quarter 1994</i>	<i>19.9</i>	<i>29.0</i>	<i>36.9</i>	<i>42.1</i>	<i>47.0</i>	<i>30.6</i>	<i>37.2</i>
<b>GUEST ARRIVALS</b>							
<i>March quarter 1993</i>	<i>13,743</i>	<i>342,676</i>	<i>592,077</i>	<i>271,072</i>	<i>175,564</i>	<i>111,374</i>	<i>1,506,506</i>
<i>1994—</i>							
January	2,779	152,421	255,724	124,045	69,682	23,584	628,235
February	2,058	102,767	192,474	104,624	72,282	19,180	493,385
March	2,047	116,273	212,946	125,540	76,639	22,082	555,527
<i>March quarter 1994</i>	<i>6,884</i>	<i>371,461</i>	<i>661,144</i>	<i>354,209</i>	<i>218,603</i>	<i>64,846</i>	<i>1,677,147</i>
<b>AVERAGE LENGTH OF STAY (days)</b>							
<i>March quarter 1993</i>	<i>1.8</i>	<i>1.9</i>	<i>2.3</i>	<i>3.0</i>	<i>3.2</i>	<i>3.1</i>	<i>2.5</i>
<i>March quarter 1994</i>	<i>2.1</i>	<i>1.8</i>	<i>2.4</i>	<i>2.6</i>	<i>3.1</i>	<i>3.2</i>	<i>2.4</i>
<b>TAKINGS FROM ACCOMMODATION (\$'000)</b>							
<i>March quarter 1993</i>	<i>615</i>	<i>15,886</i>	<i>49,197</i>	<i>42,011</i>	<i>46,077</i>	<i>13,261</i>	<i>167,047</i>
<i>1994—</i>							
January	204	6,903	22,478	16,961	20,777	2,536	69,858
February	170	4,573	17,331	14,245	17,935	1,903	56,159
March	140	5,257	19,954	16,492	20,580	2,165	64,588
<i>March quarter 1994</i>	<i>514</i>	<i>16,734</i>	<i>59,763</i>	<i>47,698</i>	<i>59,291</i>	<i>6,604</i>	<i>190,605</i>

(a) From December quarter 1993, establishments with fewer than 5 rooms have been formally excluded from the scope of this collection. See Explanatory Note 2 (page 29).

TABLE 6 — HOTELS, MOTELS AND GUEST HOUSES WITH FACILITIES BY STATISTICAL DIVISION,  
QUEENSLAND

Particulars	Brisbane (SD)			Moreton (SD)			Wide Bay-Burnett (SD)		
	Licensed hotels	Motels, etc.	Total	Licensed hotels	Motels, etc.	Total	Licensed hotels	Motels, etc.	Total
<b>ESTABLISHMENTS, CAPACITY AND EMPLOYMENT</b>									
<i>March quarter 1993—</i>									
Establishments	37	96	133	43	215	258	23	103	126
Guest rooms	2,454	3,769	6,223	5,872	5,209	11,081	573	1,799	2,372
Bed spaces	6,344	11,103	17,447	17,869	16,345	34,214	1,875	5,686	7,561
Employment (persons)	3,143	1,750	4,893	7,632	1,719	9,351	456	555	1,011
<i>March quarter 1994—</i>									
Establishments	36	96	132	40	211	251	19	103	122
Guest rooms	2,439	3,710	6,149	5,803	5,184	10,987	535	1,838	2,373
Bed spaces	6,232	10,886	17,118	18,017	16,104	34,121	1,690	5,833	7,523
Employment (persons)	3,361	1,751	5,112	8,370	1,854	10,224	440	588	1,028
<b>ROOM NIGHTS OCCUPIED</b>									
<i>March quarter 1993</i>	143,819	213,095	356,914	353,385	272,230	625,615	18,830	71,390	90,220
<i>1994—</i>									
January	45,240	72,935	118,175	145,502	116,646	262,148	8,767	29,859	38,626
February	53,715	68,465	122,180	117,682	77,943	195,625	4,999	23,161	28,160
March	57,762	79,036	136,798	125,246	82,666	207,912	5,591	25,888	31,479
<i>March quarter 1994</i>	156,717	220,436	377,153	388,430	277,255	665,685	19,357	78,908	98,265
<b>ROOM OCCUPANCY RATES (per cent)</b>									
<i>March quarter 1993</i>	65.1	62.8	63.7	66.9	58.2	62.8	36.5	44.1	42.3
<i>1994—</i>									
January	59.8	63.4	62.0	80.9	72.6	77.0	52.9	52.4	52.5
February	78.7	66.8	71.5	72.4	53.8	63.6	33.4	45.0	42.4
March	76.4	69.6	72.3	69.6	51.5	61.1	33.7	45.4	42.8
<i>March quarter 1994</i>	71.4	66.6	68.5	74.4	59.5	67.3	40.2	47.7	46.0
<b>GUEST NIGHTS</b>									
<i>March quarter 1993</i>	207,939	368,448	576,387	704,712	615,887	1,320,599	36,939	130,956	167,895
<i>1994—</i>									
January	71,481	146,384	217,865	307,171	290,933	598,104	22,436	63,830	86,266
February	77,788	112,059	189,847	224,882	163,244	388,126	10,608	38,234	48,842
March	81,603	128,128	209,731	235,022	175,387	410,409	12,555	41,862	54,417
<i>March quarter 1994</i>	230,872	386,571	617,443	767,075	629,564	1,396,639	45,599	143,926	189,525
<b>BED OCCUPANCY RATES (per cent)</b>									
<i>March quarter 1993</i>	36.4	36.9	36.7	43.6	42.0	42.8	21.9	25.6	24.7
<i>1994—</i>									
January	37.0	43.4	41.1	55.0	58.3	56.5	42.8	35.3	37.0
February	44.6	37.3	39.9	44.6	36.3	40.7	22.4	23.4	23.2
March	42.2	38.5	39.9	42.1	35.2	38.8	24.0	23.2	23.3
<i>March quarter 1994</i>	41.2	39.8	40.3	47.3	43.5	45.5	30.0	27.4	28.0
<b>GUEST ARRIVALS</b>									
<i>March quarter 1993</i>	114,721	157,638	272,359	197,420	219,961	417,381	20,945	85,094	106,039
<i>1994—</i>									
January	37,035	60,063	97,098	86,814	98,936	185,750	7,330	39,537	46,867
February	42,208	50,942	93,150	76,155	66,709	142,864	5,695	25,888	31,583
March	43,391	56,226	99,617	78,715	74,056	152,771	7,148	29,423	36,571
<i>March quarter 1994</i>	122,634	167,231	289,865	241,684	239,701	481,385	20,173	94,848	115,021
<b>AVERAGE LENGTH OF STAY (days)</b>									
<i>March quarter 1993</i>	1.8	2.3	2.1	3.6	2.8	3.2	1.8	1.5	1.6
<i>March quarter 1994</i>	1.9	2.3	2.1	3.2	2.6	2.9	2.3	1.5	1.6
<b>TAKINGS FROM ACCOMMODATION (\$'000)</b>									
<i>March quarter 1993</i>	12,174	14,334	26,507	41,392	18,037	59,429	1,163	3,508	4,671
<i>1994—</i>									
January	3,988	5,139	9,127	18,889	9,068	27,957	601	1,607	2,208
February	5,110	4,968	10,078	13,226	5,003	18,229	283	1,154	1,437
March	5,652	5,695	11,347	15,321	5,456	20,777	329	1,272	1,601
<i>March quarter 1994</i>	14,749	15,803	30,552	47,436	19,527	66,963	1,213	4,033	5,246

TABLE 6—HOTELS, MOTELS AND GUEST HOUSES WITH FACILITIES BY STATISTICAL DIVISION,  
QUEENSLAND (a)—continued

Particulars	Darling Downs (SD)			South-West (SD)		Fitzroy (SD)	
	Licensed hotels	Motels, etc.	Total	Total	Licensed hotels	Motels, etc.	Total
ESTABLISHMENTS, CAPACITY AND EMPLOYMENT							
<i>March quarter 1993</i>							
Establishments	24	78	102	32	33	82	115
Guest rooms	394	1,303	1,697	485	1,084	2,002	3,086
Bed spaces	1,052	4,048	5,100	1,299	3,186	6,114	9,300
Employment (persons)	299	423	722	151	887	723	1,610
<i>March quarter 1994—</i>							
Establishments	20	80	100	29	30	83	113
Guest rooms	372	1,362	1,734	460	1,129	1,992	3,121
Bed spaces	993	4,298	5,291	1,241	3,307	6,145	9,452
Employment (persons)	311	453	764	132	1,082	697	1,779
ROOM NIGHTS OCCUPIED							
<i>March quarter 1993</i>	11,798	56,402	68,200	16,819	40,107	99,274	139,381
<i>1994—</i>							
January	3,551	20,542	24,093	4,096	16,891	32,588	49,479
February	4,616	18,570	23,186	4,683	12,380	29,994	42,374
March	4,263	21,016	25,279	5,588	12,392	32,924	45,316
<i>March quarter 1994</i>	12,430	60,128	72,558	14,367	41,663	95,506	137,169
ROOM OCCUPANCY RATES (per cent)							
<i>March quarter 1993</i>	33.3	48.1	44.7	38.5	41.1	55.1	50.2
<i>1994—</i>							
January	30.8	48.7	44.8	28.7	48.3	52.8	51.1
February	44.3	48.7	47.8	36.4	39.2	53.8	48.5
March	37.0	49.8	47.0	40.1	35.4	53.3	46.8
<i>March quarter 1994</i>	37.1	49.1	46.5	35.0	41.0	53.3	48.8
GUEST NIGHTS							
<i>March quarter 1993</i>	18,789	103,613	122,402	23,888	70,384	166,756	237,140
<i>1994—</i>							
January	6,635	43,139	49,774	6,760	36,153	65,570	101,723
February	7,618	32,458	40,076	6,476	20,762	45,205	65,967
March	6,638	36,319	42,957	8,017	23,013	50,852	73,865
<i>March quarter 1994</i>	20,891	111,916	132,807	21,253	79,928	161,627	241,555
BED OCCUPANCY RATES (per cent)							
<i>March quarter 1993</i>	19.8	28.4	26.7	20.4	24.5	30.3	28.3
<i>1994—</i>							
January	21.6	32.4	30.3	17.6	35.3	34.4	34.7
February	27.4	27.0	27.1	18.6	22.4	26.3	24.9
March	21.6	27.3	26.2	21.2	22.4	26.7	25.2
<i>March quarter 1994</i>	23.4	28.9	27.9	19.1	26.9	29.2	28.4
GUEST ARRIVALS							
<i>March quarter 1993</i>	11,393	76,539	87,932	16,253	25,670	101,620	127,290
<i>1994—</i>							
January	4,532	30,708	35,240	5,260	9,916	43,169	53,085
February	5,615	23,154	28,769	4,501	7,937	29,093	37,030
March	4,581	27,076	31,657	5,462	8,434	31,658	40,092
<i>March quarter 1994</i>	14,728	80,938	95,666	15,223	26,287	103,920	130,207
AVERAGE LENGTH OF STAY (days)							
<i>March quarter 1993</i>	1.6	1.4	1.4	1.5	2.7	1.6	1.9
<i>March quarter 1994</i>	1.4	1.4	1.4	1.4	3.0	1.6	1.9
TAKINGS FROM ACCOMMODATION (\$'000)							
<i>March quarter 1993</i>	524	2,910	3,434	736	3,504	5,128	8,631
<i>1994—</i>							
January	171	1,147	1,318	194	1,797	1,810	3,607
February	235	992	1,226	216	1,042	1,598	2,640
March	207	1,096	1,303	271	1,122	1,809	2,931
<i>March quarter 1994</i>	612	3,234	3,847	681	3,960	5,217	9,177

TABLE 6 — HOTELS, MOTELS AND GUEST HOUSES WITH FACILITIES BY STATISTICAL DIVISION,  
QUEENSLAND (a)—continued

Particulars	Central-West (SD)			Mackay (SD)			Northern (SD)		
	Total	Licensed hotels	Motels, etc.	Total	Licensed hotels	Motels, etc.	Total	Licensed hotels	Motels, etc.
ESTABLISHMENTS, CAPACITY AND EMPLOYMENT									
<i>March quarter 1993—</i>									
Establishments	15	29	59	88	23	56	79		
Guest rooms	284	2,636	1,541	4,177	791	1,817	2,608		
Bed spaces	882	8,267	5,104	13,371	2,368	5,504	7,872		
Employment (persons)	86	2,222	559	2,781	1,090	591	1,681		
<i>March quarter 1994—</i>									
Establishments	16	28	59	87	21	56	77		
Guest rooms	297	2,721	1,532	4,253	780	1,796	2,576		
Bed spaces	905	8,836	4,943	13,779	2,179	5,417	7,596		
Employment (persons)	97	2,394	552	2,946	1,071	559	1,630		
ROOM NIGHTS OCCUPIED									
<i>March quarter 1993</i>	8,881	124,462	61,142	185,604	40,090	77,764	117,854		
<i>1994—</i>									
January	3,128	50,516	27,601	78,117	11,483	26,038	37,521		
February	2,354	41,160	21,555	62,715	11,488	24,490	35,978		
March	3,303	46,106	24,613	70,719	14,724	27,281	42,005		
<i>March quarter 1994</i>	8,785	137,782	73,769	211,551	37,695	77,809	115,504		
ROOM OCCUPANCY RATES (per cent)									
<i>March quarter 1993</i>	34.7	52.5	44.2	49.4	56.3	47.6	50.2		
<i>1994—</i>									
January	34.0	59.9	58.1	59.3	47.5	46.8	47.0		
February	28.3	54.0	50.2	52.7	53.4	48.7	50.1		
March	35.9	54.7	51.8	53.6	60.9	49.0	52.6		
<i>March quarter 1994</i>	32.9	56.3	53.5	55.3	54.0	48.1	49.9		
GUEST NIGHTS									
<i>March quarter 1993</i>	15,910	250,928	113,094	364,022	59,819	137,782	197,601		
<i>1994—</i>									
January	6,851	123,308	60,621	183,929	19,188	54,110	73,298		
February	3,722	83,203	36,244	119,447	16,605	39,249	55,854		
March	5,190	104,260	41,774	146,034	20,768	43,375	64,143		
<i>March quarter 1994</i>	15,763	310,771	138,639	449,410	56,561	136,734	193,295		
BED OCCUPANCY RATES (per cent)									
<i>March quarter 1993</i>	20.0	33.7	24.7	30.3	28.1	27.8	27.9		
<i>1994—</i>									
January	24.4	45.0	39.6	43.1	28.4	32.2	31.1		
February	14.7	33.6	26.2	31.0	27.5	25.9	26.4		
March	18.5	38.1	27.3	34.2	30.7	25.8	27.2		
<i>March quarter 1994</i>	19.4	39.1	31.2	36.2	28.9	28.0	28.3		
GUEST ARRIVALS									
<i>March quarter 1993</i>	11,526	66,092	61,900	127,992	33,856	73,148	107,004		
<i>1994—</i>									
January	5,307	41,899	29,044	70,943	9,841	28,582	38,423		
February	2,869	24,080	17,821	41,901	9,010	21,555	30,565		
March	3,677	37,459	20,243	57,702	10,908	23,208	34,116		
<i>March quarter 1994</i>	11,853	103,438	67,108	170,546	29,759	73,345	103,104		
AVERAGE LENGTH OF STAY (days)									
<i>March quarter 1993</i>	1.4	3.8	1.8	2.8	1.8	1.9	1.8		
<i>March quarter 1994</i>	1.3	3.0	2.1	2.6	1.9	1.9	1.9		
TAKINGS FROM ACCOMMODATION (\$'000)									
<i>March quarter 1993</i>	450	15,805	3,404	19,210	2,772	3,871	6,643		
<i>1994—</i>									
January	179	6,952	1,608	8,560	893	1,383	2,276		
February	122	5,372	1,153	6,524	862	1,206	2,068		
March	167	6,003	1,344	7,347	1,112	1,440	2,551		
<i>March quarter 1994</i>	469	18,326	4,104	22,431	2,867	4,029	6,895		

TABLE 6—HOTELS, MOTELS AND GUEST HOUSES WITH FACILITIES BY STATISTICAL DIVISION,  
QUEENSLAND (a)—continued

Particulars	Far North (SD)			North-West (SD)			Queensland		
	Licensed hotels	Motels, etc.	Total	Licensed hotels	Motels, etc.	Total	Licensed hotels	Motels, etc.	Total
ESTABLISHMENTS, CAPACITY AND EMPLOYMENT									
<i>March quarter 1993—</i>									
Establishments	41	101	142	14	17	31	281	840	1,121
Guest rooms	3,647	3,675	7,322	230	370	600	17,845	22,090	39,935
Bed spaces	10,754	11,901	22,655	576	1,055	1,631	52,691	68,641	121,332
Employment (persons)	3,217	1,470	4,687	143	98	241	19,163	8,051	27,214
<i>March quarter 1994—</i>									
Establishments	39	97	136	13	17	30	258	835	1,093
Guest rooms	3,757	3,771	7,528	223	361	584	17,914	22,148	40,062
Bed spaces	11,145	11,975	23,120	573	1,039	1,612	53,344	68,414	121,758
Employment (persons)	3,209	1,577	4,786	159	109	268	20,456	8,310	28,766
ROOM NIGHTS OCCUPIED									
<i>March quarter 1993</i>	199,197	182,487	381,684	7,516	14,625	22,141	944,074	1,069,239	2,013,313
<i>1994—</i>									
January	74,166	65,898	140,064	2,190	4,042	6,232	359,259	402,420	761,679
February	68,352	58,463	126,815	2,325	4,092	6,417	317,902	332,585	650,487
March	81,361	71,617	152,978	2,589	4,665	7,254	351,342	377,289	728,631
<i>March quarter 1994</i>	223,879	195,978	419,857	7,104	12,799	19,903	1,028,503	1,112,294	2,140,797
ROOM OCCUPANCY RATES (per cent)									
<i>March quarter 1993</i>	60.7	55.2	57.9	36.3	43.9	41.0	58.8	53.8	56.0
<i>1994—</i>									
January	63.7	56.4	60.0	31.7	36.1	34.4	64.7	58.6	61.3
February	65.0	55.4	60.2	37.2	40.5	39.2	63.4	53.8	58.1
March	69.9	61.3	65.6	37.5	41.7	40.1	63.3	55.1	58.8
<i>March quarter 1994</i>	66.2	57.7	62.0	35.4	39.4	37.9	63.8	55.9	59.4
GUEST NIGHTS									
<i>March quarter 1993</i>	362,707	340,339	703,046	9,411	22,342	31,753	1,727,797	2,032,846	3,760,643
<i>1994—</i>									
January	144,912	129,779	274,691	2,919	7,310	10,229	735,773	873,717	1,609,490
February	124,297	103,817	228,114	2,991	5,991	8,982	570,449	585,004	1,155,453
March	148,833	128,169	277,002	3,188	7,109	10,297	637,687	664,375	1,302,062
<i>March quarter 1994</i>	418,042	361,765	779,807	9,098	20,410	29,508	1,943,909	2,123,096	4,067,005
BED OCCUPANCY RATES (per cent)									
<i>March quarter 1993</i>	37.5	31.8	34.5	18.2	23.5	21.6	36.4	32.9	34.4
<i>1994—</i>									
January	41.9	35.0	38.3	16.4	22.7	20.5	44.5	41.2	42.6
February	39.8	31.0	35.2	18.6	20.6	19.9	38.2	30.6	34.0
March	43.1	34.5	38.6	17.9	22.1	20.6	38.6	31.4	34.6
<i>March quarter 1994</i>	41.7	33.6	37.5	17.6	21.8	20.3	40.5	34.5	37.2
GUEST ARRIVALS									
<i>March quarter 1993</i>	99,006	115,110	214,116	4,842	13,772	18,614	577,510	928,996	1,506,506
<i>1994—</i>									
January	39,019	45,378	84,397	1,395	4,470	5,865	239,018	389,217	628,235
February	38,182	37,558	75,740	1,352	3,061	4,413	211,439	281,946	493,385
March	42,695	45,761	88,456	1,476	3,930	5,406	236,177	319,350	555,527
<i>March quarter 1994</i>	119,896	128,697	248,593	4,223	11,461	15,684	686,634	990,513	1,677,147
AVERAGE LENGTH OF STAY (days)									
<i>March quarter 1993</i>	3.7	3.0	3.3	1.9	1.6	1.7	3.0	2.2	2.5
<i>March quarter 1994</i>	3.5	2.8	3.1	2.2	1.8	1.9	2.8	2.1	2.4
TAKINGS FROM ACCOMMODATION (\$'000)									
<i>March quarter 1993</i>	24,349	11,823	36,173	316	848	1,163	102,137	64,910	167,047
<i>1994—</i>									
January	9,593	4,509	14,102	98	232	330	43,025	26,833	69,858
February	9,252	4,024	13,276	101	240	341	35,531	20,628	56,159
March	10,976	4,937	15,913	112	268	381	40,891	23,697	64,588
<i>March quarter 1994</i>	29,822	13,469	43,291	311	741	1,052	119,446	71,158	190,605

(a) From December quarter 1993, establishments with fewer than 5 rooms have been excluded from the scope of this collection. See Explanatory Note 2 (page 29).

TABLE 7 — HOTELS, MOTELS AND GUEST HOUSES WITH FACILITIES: STATISTICAL DIVISIONS AND

Statistical Divisions and selected Subdivisions and Statistical Local Areas	Establish- ments	Guest rooms	Bed spaces	Employ- ment (persons)	Room nights occupied				Room occupancy rates (per cent)			
					Jan.	Feb.	Mar.	Mar. qtr	Jan.	Feb.	Mar.	Mar. qtr
					Ascot	4	78	225	25	1,548	1,253	1,559
Aspley	4	67	211	25	1,416	1,056	1,263	3,735	68.2	56.3	60.8	61.9
<b>Brisbane City Core (a)</b>												
City — Inner	7	1,240	2,992	1,184	23,171	29,344	31,003	83,518	60.3	84.5	80.7	74.8
City — Remainder	7	1,239	3,367	1,391	23,748	28,572	31,733	84,053	61.8	85.8	86.0	77.4
Kangaroo Point	10	389	1,198	161	8,404	6,111	7,715	22,230	69.7	56.1	64.0	63.5
Spring Hill	12	901	2,767	520	17,466	19,172	23,160	59,798	62.5	76.0	82.9	73.7
Balance	8	358	879	187	8,192	7,162	7,580	22,934	73.8	71.4	68.3	71.2
Licensed hotels	12	2,034	5,217	2,347	38,959	48,589	52,058	139,606	61.8	85.3	82.6	76.3
Motels and guest houses	32	2,093	5,986	1,096	42,022	41,772	49,133	132,927	64.8	73.0	77.5	71.7
Total	44	4,127	11,203	3,443	80,981	90,361	101,191	272,533	63.3	79.1	80.0	73.9
Hamilton	10	319	972	220	5,716	5,944	7,028	18,688	57.8	66.5	71.1	65.1
Brisbane City (SSD) — Balance	44	1,110	3,174	952	19,543	17,763	18,987	56,293	56.8	57.2	55.2	56.3
<b>Brisbane City (SSD)</b>	<b>106</b>	<b>5,701</b>	<b>15,785</b>	<b>4,665</b>	<b>109,204</b>	<b>116,377</b>	<b>130,028</b>	<b>355,609</b>	<b>61.8</b>	<b>73.5</b>	<b>74.2</b>	<b>69.7</b>
Ipswich (C)	6	121	377	90	2,587	1,776	2,097	6,460	69.0	52.4	55.9	59.3
Logan City (SSD)	4	48	160	86	1,029	612	759	2,400	69.2	45.5	51.0	55.6
Redcliffe City (SSD)	4	98	235	42	1,901	1,341	1,371	4,613	62.6	48.9	45.1	52.3
Redland Shire (SSD)	6	91	269	131	1,545	929	1,213	3,687	54.8	36.5	43.0	45.0
Balance	6	90	292	98	1,909	1,145	1,330	4,384	68.4	45.4	47.7	54.1
<b>Brisbane (SD)</b>	<b>132</b>	<b>6,149</b>	<b>17,118</b>	<b>5,112</b>	<b>118,175</b>	<b>122,180</b>	<b>136,798</b>	<b>377,153</b>	<b>62.0</b>	<b>71.5</b>	<b>72.3</b>	<b>68.5</b>
Boonah (S)	3	26	76	10	241	143	236	620	29.9	19.6	29.3	26.5
Cajoundra (C) — Parts A and B	27	465	1,451	296	8,711	4,168	5,555	18,434	60.4	32.0	38.5	44.0
Esk (S)	5	39	134	8	289	282	271	842	23.9	25.8	22.4	24.0
<b>Gold Coast City (SSD)</b>												
Bilinga	7	92	317	18	1,834	1,031	1,143	4,008	64.3	40.0	40.1	48.4
Burleigh Heads	6	158	503	43	3,368	2,376	2,269	8,013	68.8	53.7	46.3	56.4
Coolangatta	7	268	813	103	5,656	4,005	4,623	14,284	68.1	53.4	55.6	59.2
Curumbin	3	61	167	35	1,164	675	743	2,582	61.6	39.5	39.3	47.0
Labrador	7	106	359	32	2,387	1,645	2,028	6,060	72.6	55.4	61.7	63.5
Mermaid Beach	14	225	700	39	5,163	3,368	3,605	12,136	74.0	53.5	51.7	59.9
Miami	6	97	290	15	2,302	1,368	1,323	4,993	76.6	50.4	44.0	57.2
Palm Beach	12	151	435	30	3,077	1,901	1,832	6,810	65.7	45.0	39.1	50.1
Southport	5	186	586	90	4,148	2,053	2,538	8,739	71.9	39.4	44.0	52.2
Surfers Paradise	28	3,536	10,730	2,391	95,968	78,846	82,020	256,834	87.5	79.6	74.8	80.7
Balance	16	2,158	7,269	4,091	55,280	47,639	48,173	151,092	82.6	78.8	72.0	77.8
Licensed hotels	14	3,885	12,431	5,808	103,330	91,241	94,335	288,906	85.8	83.9	78.3	82.6
Motels and guest houses	97	3,153	9,738	1,079	77,017	53,666	55,962	186,645	78.8	60.8	57.3	65.8
Total	111	7,038	22,169	6,887	180,347	144,907	150,297	475,551	82.7	73.5	68.9	75.1
Maroochy (S) — Parts A and B	51	1,629	4,688	1,523	33,236	19,676	22,231	75,143	65.8	43.1	44.0	51.3
Noosa (S) — Parts A and B	21	622	2,040	497	16,331	10,599	11,959	38,889	84.7	60.9	62.0	69.5
Balance	33	1,168	3,563	1,003	22,993	15,850	17,363	56,206	63.5	48.7	48.2	53.6
<b>Moreton (SD)</b>	<b>251</b>	<b>10,987</b>	<b>34,121</b>	<b>10,224</b>	<b>262,148</b>	<b>195,625</b>	<b>207,912</b>	<b>665,685</b>	<b>77.0</b>	<b>63.6</b>	<b>61.1</b>	<b>67.3</b>
Bundaberg (C)	24	435	1,336	136	7,908	6,773	7,165	21,846	58.6	55.6	53.1	55.8
Gympie (C)	9	170	508	55	3,419	2,808	3,148	9,375	64.9	59.0	59.7	61.3
Hervey Bay (C)	19	627	2,045	360	11,414	5,726	6,495	23,635	58.7	32.6	33.4	41.9
Isis (S)	5	66	211	18	1,097	747	869	2,713	53.6	40.4	42.5	45.7
Kingaroy (S)	6	140	408	59	1,134	1,517	2,093	4,744	26.1	38.7	48.2	37.7
Kolan (S)	3	38	136	12	787	485	606	1,878	66.8	45.6	51.4	54.9
Maryborough (C)	14	312	953	146	3,664	3,781	4,311	11,756	37.9	43.3	44.6	41.9
Miriam Vale (S)	7	122	432	64	2,307	2,007	1,886	6,200	61.0	58.8	49.9	56.5
Nanango (S)	4	50	124	11	528	532	590	1,650	34.1	38.0	38.1	36.7
Widgee (S)	6	107	353	32	1,844	608	809	3,261	55.6	20.3	24.4	33.9
Woongarra (S) — Parts A and B	8	99	450	49	2,120	994	930	4,044	69.1	35.9	30.3	45.4
Balance	17	207	567	86	2,404	2,182	2,577	7,163	37.5	37.6	40.2	38.4
<b>Wide Bay-Burnett (SD)</b>	<b>122</b>	<b>2,373</b>	<b>7,523</b>	<b>1,028</b>	<b>38,626</b>	<b>28,160</b>	<b>31,479</b>	<b>98,265</b>	<b>52.5</b>	<b>42.4</b>	<b>42.8</b>	<b>46.0</b>
Chinchilla (S)	5	70	193	23	471	663	827	1,961	21.7	33.8	38.1	31.1
Dalby (T)	7	147	412	46	1,577	1,780	2,706	6,063	34.6	43.2	59.4	45.8
Goondiwindi (T)	9	164	511	79	3,449	2,837	3,295	9,581	67.8	61.8	64.8	64.9
Inglewood (S)	4	39	121	15	468	476	531	1,475	38.7	43.6	43.9	42.0
Jondaryan (S)	4	40	115	8	505	426	478	1,409	40.7	38.0	38.5	39.1
Murilla (S)	3	47	128	16	629	507	745	1,881	43.2	38.5	51.1	44.5
Stanthorpe (S)	7	124	361	58	1,616	1,248	1,464	4,328	42.0	35.9	38.1	38.8
Taroom (S)	3	30	79	20	301	287	310	898	32.4	34.2	33.3	33.3
Toowoomba (C)	33	700	2,212	317	11,076	11,306	10,963	33,345	51.0	57.7	50.5	52.9
Warwick (C)	11	192	621	72	2,463	1,838	2,667	6,968	41.4	34.2	44.8	40.3
Balance	14	181	538	110	1,538	1,818	1,293	4,649	27.4	35.9	23.0	28.5
<b>Darling Downs (SD)</b>	<b>100</b>	<b>1,734</b>	<b>5,291</b>	<b>764</b>	<b>24,093</b>	<b>23,186</b>	<b>25,279</b>	<b>72,558</b>	<b>44.8</b>	<b>47.8</b>	<b>47.0</b>	<b>46.5</b>
Balonne (S)	5	88	220	21	849	902	1,043	2,794	31.1	36.6	38.2	35.3
Murweh (S)	5	84	221	19	531	833	901	2,265	20.4	35.4	34.6	30.0
Paroo (S)	4	42	100	16	377	375	440	1,192	29.0	31.9	44.4	34.4
Roma (T)	8	169	477	53	1,723	1,936	2,533	6,192	32.9	40.9	48.3	40.7
Balance	7	77	223	23	616	637	671	1,924	25.8	29.5	28.1	27.8
<b>South-West (SD)</b>	<b>29</b>	<b>460</b>	<b>1,241</b>	<b>132</b>	<b>4,096</b>	<b>4,683</b>	<b>5,588</b>	<b>14,367</b>	<b>28.7</b>	<b>36.4</b>	<b>40.1</b>	<b>35.0</b>

## SELECTED SUBDIVISIONS AND STATISTICAL LOCAL AREAS, QUEENSLAND, MARCH QUARTER 1994

<i>Guest nights</i>				<i>Guest arrivals</i>				<i>Takings from accommodation (\$'000)</i>			
<i>Jan.</i>	<i>Feb.</i>	<i>Mar.</i>	<i>Mar. qtr</i>	<i>Jan.</i>	<i>Feb.</i>	<i>Mar.</i>	<i>Mar. qtr</i>	<i>Jan.</i>	<i>Feb.</i>	<i>Mar.</i>	<i>Mar. qtr</i>
2,982	2,156	2,529	7,667	1,746	1,404	1,640	4,790	96	78	90	264
3,227	1,878	2,219	7,324	2,154	1,257	1,410	4,821	72	51	61	184
37,553	44,476	45,695	127,724	22,691	28,536	28,291	79,518	1,877	2,427	2,666	6,969
39,673	41,418	44,872	125,963	16,977	17,923	19,532	54,432	2,398	3,167	3,611	9,176
17,628	10,089	12,824	40,541	6,482	3,704	4,303	14,489	667	570	613	1,849
35,360	29,971	37,293	102,624	14,261	14,284	15,789	44,334	1,299	1,398	1,677	4,374
16,085	11,827	12,582	40,494	4,604	3,868	4,493	12,965	552	471	516	1,538
61,398	70,521	73,537	205,456	33,192	39,122	39,844	112,158	3,698	4,866	5,394	13,958
84,901	67,260	79,729	231,890	31,823	29,193	32,564	93,580	3,094	3,166	3,689	9,949
146,299	137,781	153,266	437,346	65,015	68,315	72,408	205,738	6,792	8,033	9,083	23,907
10,485	9,271	10,589	30,345	6,133	5,547	6,442	18,122	463	502	601	1,565
37,472	29,468	30,310	97,250	14,938	11,995	12,448	39,381	1,189	1,087	1,146	3,422
200,465	180,554	198,913	579,932	89,986	88,518	94,348	272,852	8,612	9,750	10,980	29,342
5,713	2,863	3,427	12,003	1,908	1,306	1,542	4,756	170	106	129	404
2,319	1,006	1,116	4,441	1,023	606	596	2,225	64	35	49	148
3,006	2,126	2,015	7,147	1,160	921	717	2,798	74	60	51	185
3,012	1,598	2,193	6,803	1,439	824	1,073	3,336	87	46	59	191
3,350	1,700	2,067	7,117	1,582	975	1,341	3,898	121	81	80	282
217,865	189,847	209,731	617,443	97,098	93,150	99,617	289,865	9,127	10,078	11,347	30,552
419	235	372	1,026	316	191	306	813	9	7	10	26
22,708	8,040	11,249	41,997	9,147	4,541	6,264	19,952	534	196	270	1,000
500	409	451	1,360	276	219	270	765	11	11	10	32
4,432	2,087	2,318	8,837	1,800	969	1,120	3,889	114	45	49	209
7,960	4,441	4,535	16,936	2,903	2,034	2,141	7,078	269	124	121	514
14,382	8,485	9,289	32,156	2,966	2,383	2,543	7,892	432	245	292	970
2,098	1,033	1,147	4,278	1,592	689	805	3,086	45	16	18	78
4,576	2,461	2,894	9,931	2,529	1,395	1,636	5,560	113	52	70	235
11,377	6,588	6,877	24,842	4,471	2,761	2,842	10,074	301	118	130	548
4,869	2,636	2,588	10,093	3,063	1,681	1,581	6,325	139	52	48	239
6,017	3,264	3,018	12,299	3,088	2,073	1,881	7,042	160	68	64	292
6,910	3,774	4,386	15,070	2,899	1,691	2,690	7,280	290	139	165	594
212,041	154,692	162,596	529,329	58,634	53,237	55,792	167,663	9,587	7,088	8,225	24,900
124,688	94,046	95,551	314,285	27,006	26,407	26,372	79,785	7,692	5,726	6,158	19,576
211,882	170,103	175,202	557,187	51,454	51,863	52,392	155,709	13,096	10,282	11,714	35,092
187,468	113,404	119,997	420,869	59,497	43,457	47,011	149,965	6,046	3,391	3,626	13,063
399,350	283,507	295,199	978,056	110,951	95,320	99,403	305,674	19,142	13,672	15,340	48,155
84,140	37,989	41,505	163,634	28,928	17,736	19,395	66,059	3,775	1,631	1,989	7,395
38,889	24,904	27,172	90,965	12,312	9,238	10,572	32,122	2,265	1,230	1,375	4,870
52,098	33,042	34,461	119,601	23,820	15,619	16,561	56,000	2,221	1,483	1,782	5,485
598,104	388,126	410,409	1,396,639	185,750	142,864	152,771	481,385	27,957	18,229	20,777	66,963
14,953	9,892	10,472	35,317	9,524	6,754	6,985	23,263	390	324	347	1,061
7,111	4,781	4,967	16,859	4,854	3,524	3,863	12,241	173	136	150	459
29,350	11,986	13,949	55,285	10,379	6,225	7,715	24,319	811	348	399	1,558
2,459	1,371	1,603	5,433	2,344	1,286	1,515	5,145	50	34	39	123
1,866	2,169	3,141	7,176	1,411	1,514	2,236	5,161	48	64	92	204
1,943	956	1,287	4,186	1,943	923	1,178	4,044	38	22	27	87
7,489	6,358	7,399	21,246	6,148	4,787	5,756	16,691	185	177	205	566
5,289	3,800	3,375	12,464	3,083	1,863	2,036	6,982	183	153	126	462
767	688	815	2,270	479	406	544	1,429	21	21	25	67
4,404	1,355	1,469	7,228	1,718	736	737	3,191	96	28	52	176
6,869	2,388	2,063	11,320	2,495	1,314	1,282	5,091	130	50	43	222
3,766	3,098	3,877	10,741	2,489	2,251	2,724	7,464	83	81	97	261
86,266	48,842	54,417	189,525	46,867	31,583	36,571	115,021	2,208	1,437	1,601	5,246
899	1,210	1,552	3,661	854	1,100	1,403	3,357	21	29	36	85
2,903	2,703	3,951	9,557	2,022	1,677	2,094	5,793	75	76	117	269
7,214	4,517	5,522	17,253	6,513	3,854	4,617	14,984	198	151	176	524
648	627	681	1,956	473	519	597	1,589	13	16	16	45
789	776	714	2,279	777	677	673	2,127	23	18	21	62
1,071	719	1,085	2,875	993	628	1,006	2,627	33	27	38	98
3,116	2,297	2,704	8,117	2,126	1,531	1,818	5,475	78	63	76	218
527	414	496	1,437	444	337	391	1,172	13	12	13	38
23,293	19,938	18,867	62,098	14,295	12,983	13,570	40,848	633	639	609	1,881
5,267	3,131	4,747	13,145	4,290	2,554	3,976	10,820	146	94	135	374
4,047	3,744	2,638	10,429	2,453	2,909	1,512	6,874	83	102	68	253
49,774	40,076	42,957	132,807	35,240	28,769	31,657	95,666	1,318	1,226	1,303	3,847
1,391	1,195	1,439	4,025	1,027	849	981	2,857	41	43	52	135
873	1,151	1,205	3,229	608	622	680	1,910	28	40	46	114
536	489	556	1,581	434	387	456	1,277	15	14	16	46
2,911	2,727	3,877	9,515	2,240	1,939	2,558	6,737	83	94	129	306
1,049	914	940	2,903	951	704	787	2,442	27	25	29	80
6,760	6,476	8,017	21,253	5,260	4,501	5,462	15,223	194	216	271	681

TABLE 7 — HOTELS, MOTELS AND GUEST HOUSES WITH FACILITIES: STATISTICAL DIVISIONS AND

Statistical Divisions and selected Subdivisions and Statistical Local Areas	Establish- ments	Guest rooms	Bed spaces	Employ- ment (persons)	Room nights occupied				Room occupancy rates (per cent)			
					Jan.	Feb.	Mar.	Mar. qtr	Jan.	Feb.	Mar.	Mar. qtr
Banana (S), Fitzroy (S) and Mount Morgan (S)	11	200	523	79	2,346	2,796	2,954	8,096	37.8	49.9	47.6	45.0
Bauhinia (S)	5	59	199	32	367	291	668	1,326	20.1	17.6	36.5	25.0
Calliope (S) — Parts A and B	8	194	627	150	4,181	3,371	3,399	10,951	69.5	62.1	56.5	62.7
Duarina (S)	5	98	270	65	886	1,075	1,314	3,275	29.2	39.2	43.3	37.1
Emerald (S)	8	230	600	121	3,141	3,895	3,732	10,768	44.1	60.5	52.3	52.0
Gladstone (C)	21	511	1,634	259	5,865	6,479	7,264	19,608	37.0	45.3	45.9	42.6
Livingstone (S)	16	728	2,231	586	13,309	6,739	6,618	26,666	59.0	33.1	29.3	40.7
Rockhampton (C)	36	1,064	3,256	456	19,127	17,368	18,992	55,487	58.0	58.3	57.6	57.9
Balance	3	37	112	31	257	360	375	992	22.4	34.7	32.7	29.8
<i>Fitzroy (SD)</i>	<i>113</i>	<i>3,121</i>	<i>9,452</i>	<i>1,779</i>	<i>49,479</i>	<i>42,374</i>	<i>45,316</i>	<i>137,169</i>	<i>51.1</i>	<i>48.5</i>	<i>46.8</i>	<i>48.8</i>
Barcaldine (S)	4	51	168	20	506	490	510	1,506	32.0	34.3	32.3	32.8
Longreach (S)	5	156	464	47	1,665	1,094	1,824	4,583	34.4	25.0	37.7	32.6
Balance	7	90	273	30	957	770	969	2,696	34.3	30.6	34.7	33.3
<i>Central-West (SD)</i>	<i>16</i>	<i>297</i>	<i>905</i>	<i>97</i>	<i>3,128</i>	<i>2,354</i>	<i>3,303</i>	<i>8,785</i>	<i>34.0</i>	<i>28.3</i>	<i>35.9</i>	<i>32.9</i>
Belyando (S)	7	122	321	64	997	1,572	1,601	4,170	26.4	46.0	42.3	38.0
Mackay (C)	36	843	2,627	341	15,441	13,982	15,634	45,057	59.1	59.2	59.8	59.4
Pioneer (S) — Parts A and B	9	629	1,878	440	11,809	6,985	8,389	27,183	60.6	39.7	43.0	48.0
Sarina (S)	6	95	328	50	1,778	1,194	1,427	4,399	60.4	44.9	48.5	51.5
Whitsunday (S)	23	2,462	8,331	1,950	46,976	37,936	42,277	127,189	61.5	55.0	55.4	57.4
Balance	6	102	294	101	1,116	1,046	1,391	3,553	35.3	36.6	44.0	38.7
<i>Mackay (SD)</i>	<i>87</i>	<i>4,253</i>	<i>13,779</i>	<i>2,946</i>	<i>78,117</i>	<i>62,715</i>	<i>70,719</i>	<i>211,551</i>	<i>59.3</i>	<i>52.7</i>	<i>53.6</i>	<i>55.3</i>
Bowen (S)	10	233	637	108	2,626	2,357	2,513	7,496	36.4	36.1	34.8	35.7
Burdekin (S)	7	94	292	31	1,581	1,628	2,003	5,212	54.3	61.9	68.7	61.6
Charters Towers (C)	8	127	429	58	2,584	2,292	2,755	7,631	65.6	64.5	70.0	66.8
Hinchinbrook (S)	5	79	216	26	826	805	980	2,611	33.7	36.4	40.0	36.7
Townsville City (SSD)												
City	7	559	1,647	799	8,408	9,311	12,185	29,904	48.5	59.5	70.3	59.4
Hermit Park	3	90	283	15	1,556	1,248	1,424	4,228	55.8	49.5	51.0	52.2
North Ward-Castle Hill	10	414	1,126	172	5,408	5,177	5,788	16,373	42.1	44.7	45.1	43.9
Roslea	6	163	502	45	2,678	2,123	2,506	7,307	53.0	46.5	49.6	49.8
Wulguru	3	55	174	42	1,205	994	978	3,177	70.7	64.5	57.4	64.2
Balance	15	738	2,215	325	10,585	9,926	10,708	31,219	46.3	48.8	46.8	47.2
<i>Total</i>	<i>44</i>	<i>2,019</i>	<i>5,947</i>	<i>1,398</i>	<i>29,840</i>	<i>28,779</i>	<i>33,589</i>	<i>92,208</i>	<i>47.7</i>	<i>51.2</i>	<i>53.7</i>	<i>50.8</i>
Balance	3	24	75	9	64	117	165	346	8.6	17.4	22.2	16.0
<i>Northern (SD)</i>	<i>77</i>	<i>2,576</i>	<i>7,596</i>	<i>1,630</i>	<i>37,521</i>	<i>35,978</i>	<i>42,005</i>	<i>115,504</i>	<i>47.0</i>	<i>50.1</i>	<i>52.6</i>	<i>49.9</i>
Atherton (S)	8	106	338	39	1,375	1,023	1,102	3,500	41.8	34.5	33.5	36.7
Cairns												
Licensed hotels	12	1,900	5,760	1,492	45,041	44,094	49,353	138,488	76.5	82.9	83.8	81.0
Motels and guest houses	34	2,169	7,015	981	47,083	44,010	51,747	142,840	70.0	72.5	77.0	73.2
<i>Total</i>	<i>46</i>	<i>4,069</i>	<i>12,775</i>	<i>2,473</i>	<i>92,124</i>	<i>88,104</i>	<i>101,100</i>	<i>281,328</i>	<i>73.0</i>	<i>77.3</i>	<i>80.1</i>	<i>76.8</i>
Douglas (S)	18	1,163	3,511	1,031	17,727	14,734	20,590	53,051	49.2	45.2	57.1	50.7
Eacham (S)	5	98	294	30	894	560	697	2,151	29.4	20.4	22.9	24.4
Herberton (S)	3	27	88	16	277	258	261	796	33.1	34.1	31.2	32.8
Johnstone (S)	12	262	757	78	3,031	2,399	3,055	8,485	37.3	32.7	37.6	36.0
Mareeba (S)	8	140	458	69	1,587	1,645	2,456	5,688	36.6	42.0	56.6	45.1
Mulgrave (S) — Parts A and B	14	994	2,865	604	15,091	12,299	16,327	43,717	49.0	44.2	53.0	48.9
Balance	22	669	2,034	446	7,958	5,793	7,390	21,141	38.4	30.9	35.6	35.1
<i>Far North (SD)</i>	<i>136</i>	<i>7,528</i>	<i>23,120</i>	<i>4,786</i>	<i>140,064</i>	<i>126,815</i>	<i>152,978</i>	<i>419,857</i>	<i>60.0</i>	<i>60.2</i>	<i>65.6</i>	<i>62.0</i>
Carpentaria (S)	4	59	169	24	305	304	526	1,135	16.7	18.4	28.8	21.4
Cloncurry (S)	3	52	153	14	812	719	912	2,443	50.4	49.4	56.6	52.2
Flinders (S)	4	54	153	26	646	594	629	1,869	38.6	39.3	37.6	38.5
Mount Isa (C)	14	372	976	178	4,020	4,294	4,553	12,867	34.9	41.2	39.5	38.4
Balance	5	47	161	26	449	506	634	1,589	30.8	38.4	43.5	37.6
<i>North-West (SD)</i>	<i>30</i>	<i>584</i>	<i>1,612</i>	<i>268</i>	<i>6,232</i>	<i>6,417</i>	<i>7,254</i>	<i>19,903</i>	<i>34.4</i>	<i>39.2</i>	<i>40.1</i>	<i>37.9</i>
<i>Queensland</i>	<i>1,093</i>	<i>40,062</i>	<i>121,758</i>	<i>28,766</i>	<i>761,679</i>	<i>650,487</i>	<i>728,631</i>	<i>2,140,797</i>	<i>61.3</i>	<i>58.1</i>	<i>58.8</i>	<i>59.4</i>
Albert (S) (b)	12	664	2,005	554	14,805	9,635	10,260	34,700	71.9	52.2	50.2	58.4
Beaudesert (S) (b)	12	376	1,178	337	6,120	4,511	5,189	15,820	52.5	42.8	44.5	46.7
Caboolture (S) (b)	7	121	378	157	2,447	1,466	1,754	5,667	65.2	43.3	46.8	52.0
Great Barrier Reef islands (c)	21	2,720	8,933	2,461	53,625	41,759	46,450	141,834	63.6	55.1	55.1	58.0
Sunshine Coast Statistical District (d)												
Licensed hotels	15	1,183	3,340	1,753	27,321	16,905	19,591	62,917	74.5	48.3	53.4	59.1
Motels and guest houses	66	1,370	4,322	502	28,405	16,947	18,515	63,867	66.9	44.2	43.6	51.8
<i>Total</i>	<i>81</i>	<i>2,553</i>	<i>7,662</i>	<i>2,255</i>	<i>55,726</i>	<i>32,952</i>	<i>38,106</i>	<i>126,784</i>	<i>70.4</i>	<i>46.1</i>	<i>48.1</i>	<i>55.2</i>

(a) Brisbane City Core comprises the suburbs of Bowen Hills, City, Dutton Park, Foritudo Valley, Herston, Highgate Hill, Kangaroo Point, Kelvin Grove, Milton, New Farm, Newstead, Paddington, Red Hill, South Brisbane, Spring Hill, West End and Woolloongabba. (b) Albert, Beaudesert and Caboolture Shires straddle the boundary line between Brisbane and Moreton Statistical Divisions. (c) Great Barrier Reef islands establishments are those on coastal islands from Lady Elliot in the south to Lizard in the north. (d) Sunshine Coast Statistical District comprises the more urban coastal portions of Caloundra City and Maroochy and Noosa Shires.



## SELECTED SUBDIVISIONS AND STATISTICAL LOCAL AREAS, QUEENSLAND, MARCH QUARTER 1994—continued

<i>Guest nights</i>				<i>Guest arrivals</i>				<i>Takings from accommodation (\$'000)</i>			
<i>Jan.</i>	<i>Feb.</i>	<i>Mar.</i>	<i>Mar. qtr</i>	<i>Jan.</i>	<i>Feb.</i>	<i>Mar.</i>	<i>Mar. qtr</i>	<i>Jan.</i>	<i>Feb.</i>	<i>Mar.</i>	<i>Mar. qtr</i>
3,778	3,748	3,917	11,443	2,623	2,300	2,484	7,407	116	141	147	405
671	499	1,349	2,519	431	345	678	1,454	26	24	69	118
9,145	6,219	6,222	21,586	3,381	2,391	2,415	8,187	523	425	440	1,387
1,260	1,367	1,727	4,354	608	710	888	2,206	39	48	61	147
4,503	5,127	5,304	14,934	3,349	3,423	3,559	10,331	162	208	204	574
9,663	9,082	10,578	29,323	6,651	5,983	6,554	19,188	297	327	375	999
33,122	12,828	14,493	60,443	8,104	4,335	4,667	17,106	1,412	553	607	2,572
39,231	26,650	29,776	95,657	27,620	17,174	18,479	63,273	1,019	899	1,012	2,931
350	447	499	1,296	318	369	368	1,055	13	14	17	44
101,723	65,967	73,865	241,555	53,085	37,030	40,092	130,207	3,607	2,640	2,931	9,177
920	730	758	2,408	874	667	696	2,237	24	20	22	66
3,795	1,813	2,925	8,533	2,633	1,317	1,846	5,796	106	67	104	277
2,136	1,179	1,507	4,822	1,800	885	1,135	3,820	49	35	42	126
6,851	3,722	5,190	15,763	5,307	2,869	3,677	11,853	179	122	167	469
1,494	2,125	2,003	5,622	923	1,348	1,233	3,504	47	77	78	202
29,679	21,295	23,940	74,914	18,148	12,095	13,166	43,409	799	719	817	2,335
28,291	14,511	17,318	60,120	5,798	3,336	4,109	13,243	1,032	533	699	2,264
3,723	1,927	2,457	8,107	2,272	1,280	1,570	5,122	70	57	60	188
118,460	78,034	98,156	294,650	42,707	23,092	36,448	102,247	6,546	5,084	5,610	17,240
2,282	1,555	2,160	5,997	1,095	750	1,176	3,021	65	53	83	202
183,929	119,447	146,034	449,410	70,943	41,901	57,702	170,546	8,560	6,524	7,347	22,431
4,586	3,174	3,819	11,579	2,564	1,831	2,297	6,692	102	87	99	288
2,488	2,310	2,669	7,467	1,621	1,452	1,646	4,719	66	70	84	220
4,513	3,564	4,284	12,361	2,516	2,007	2,385	6,908	128	105	137	370
1,200	1,119	1,238	3,557	913	756	943	2,612	29	27	32	89
14,694	13,626	16,815	45,135	7,912	7,736	9,003	24,651	680	767	952	2,398
3,394	2,318	2,666	8,378	2,093	1,116	1,071	4,280	70	45	59	174
10,013	7,792	8,823	26,628	4,032	3,184	3,556	10,772	286	273	322	880
5,698	4,128	4,759	14,585	3,456	2,431	2,735	8,622	107	82	97	287
2,125	1,514	1,510	5,149	1,247	791	878	2,916	48	38	37	122
24,483	16,130	17,339	57,952	11,972	9,168	9,508	30,648	756	571	728	2,055
60,407	45,508	51,912	157,827	30,712	24,426	26,751	81,889	1,947	1,775	2,194	5,916
104	179	221	504	97	93	94	284	2	4	6	12
73,298	55,854	64,143	193,295	38,423	30,565	34,116	103,104	2,276	2,068	2,551	6,895
2,782	1,707	1,689	6,178	1,872	1,275	1,169	4,316	58	43	41	142
80,634	76,133	84,661	241,428	23,544	24,874	26,838	75,256	4,876	4,727	5,346	14,949
91,083	78,437	92,102	261,622	29,628	26,441	31,293	87,362	3,131	2,947	3,502	9,581
171,717	154,570	176,763	503,050	53,172	51,315	58,131	162,618	8,008	7,674	8,848	24,530
37,208	29,771	42,075	109,054	9,330	8,582	10,882	28,794	2,795	3,120	3,800	9,715
1,920	1,037	1,188	4,145	1,337	776	856	2,969	47	27	30	104
425	343	379	1,147	252	193	306	751	9	8	8	25
5,843	3,748	4,719	14,310	2,749	2,007	2,524	7,280	168	111	149	428
3,139	2,913	4,643	10,695	1,112	1,061	1,327	3,500	76	83	107	267
35,181	24,246	32,651	92,078	8,089	6,674	8,213	22,976	1,354	1,051	1,443	3,848
16,476	9,779	12,895	39,150	6,484	3,857	5,048	15,389	1,587	1,158	1,486	4,231
274,691	228,114	277,002	779,807	84,397	75,740	88,456	248,593	14,102	13,276	15,913	43,291
394	337	644	1,375	199	230	427	856	14	15	26	56
1,475	1,268	1,589	4,332	821	593	705	2,119	39	36	45	119
1,103	936	1,074	3,113	723	582	868	2,173	26	22	26	74
6,505	5,702	6,016	18,223	3,535	2,503	2,770	8,808	230	248	256	735
752	739	974	2,465	587	505	636	1,728	20	20	28	68
10,229	8,982	10,297	29,508	5,865	4,413	5,406	15,684	330	341	381	1,052
1,609,490	1,155,453	1,302,062	4,067,005	628,235	493,385	555,527	1,677,147	69,858	56,159	64,588	190,605
32,679	21,240	20,841	74,760	14,590	10,031	9,887	34,508	1,672	1,054	1,181	3,907
15,104	8,704	10,473	34,281	7,012	3,917	4,898	15,827	424	334	495	1,253
5,140	2,696	3,031	10,867	2,513	1,527	1,806	5,846	145	87	105	337
128,342	84,739	106,335	319,416	40,453	22,603	36,719	99,775	9,051	6,747	7,663	23,462
62,889	31,634	36,810	131,333	20,124	13,579	15,513	49,216	4,152	1,802	2,254	8,208
76,933	36,243	39,809	152,985	26,521	15,594	18,175	60,290	2,255	1,175	1,292	4,722
139,822	67,877	76,619	284,318	46,645	29,173	33,688	109,506	6,407	2,977	3,546	12,930

TABLE 8—HOLIDAY FLATS, UNITS AND HOUSES BY STATISTICAL DIVISION, QUEENSLAND

Particulars	Brisbane (SD)			Moreton (SD)			Wide Bay-Burnett (SD)			Fitzroy (SD)
	Real estate agents	Other letting entities	Total	Real estate agents	Other letting entities	Total	Real estate agents	Other letting entities	Total	Total
LETTING ENTITIES, CAPACITY AND EMPLOYMENT										
<i>March quarter 1993—</i>										
Letting entities	4	22	26	62	333	395	14	24	38	11
Flats, units and houses										
Single bedroom	n.p.	n.p.	115	186	2,150	2,336	25	31	56	53
Multiple bedroom	n.p.	n.p.	397	3,576	6,755	10,331	389	183	572	44
<i>Total flats, units and houses</i>	n.p.	n.p.	512	3,762	8,905	12,667	414	214	628	97
Bed spaces	n.p.	n.p.	2,051	16,381	34,063	50,444	1,926	862	2,788	386
Employment (persons) (a)	n.p.	n.p.	88	—	1,384	1,384	—	62	62	28
<i>March quarter 1994—</i>										
Letting entities	6	26	32	60	339	399	16	23	39	10
Flats, units and houses										
Single bedroom	17	170	187	176	2,148	2,324	23	29	52	50
Multiple bedroom	207	298	505	3,588	7,083	10,671	371	162	533	39
<i>Total flats, units and houses</i>	224	468	692	3,764	9,231	12,995	394	191	585	89
Bed spaces	1,215	1,857	3,072	16,394	35,454	51,848	1,912	818	2,730	345
Employment (persons) (a)	—	99	99	—	1,478	1,478	—	60	60	22
UNIT NIGHTS OCCUPIED										
<i>March quarter 1993</i>	n.p.	n.p.	30,936	171,136	508,300	679,436	10,005	9,771	19,776	5,025
<i>1994—</i>										
January	5,976	11,298	17,274	83,115	243,000	326,115	6,422	4,438	10,860	1,893
February	2,533	7,984	10,517	43,880	150,406	194,286	2,814	2,479	5,293	833
March	2,206	9,185	11,391	44,789	153,475	198,264	2,936	2,691	5,627	916
<i>March quarter 1994</i>	10,715	28,467	39,182	171,784	546,881	718,665	12,172	9,608	21,780	3,642
UNIT OCCUPANCY RATES (per cent)										
<i>March quarter 1993</i>	n.p.	n.p.	67.1	50.5	63.4	59.6	26.9	50.7	35.0	57.6
<i>1994—</i>										
January	86.1	77.9	80.5	71.2	84.9	81.0	52.6	75.0	59.9	68.6
February	40.4	60.9	54.3	41.6	58.3	53.5	25.5	46.4	32.3	33.4
March	31.8	63.3	53.1	38.4	53.7	49.3	24.0	45.4	31.0	33.2
<i>March quarter 1994</i>	53.1	67.6	62.9	50.7	65.9	61.5	34.3	55.9	41.4	45.5
UNIT LETTINGS										
<i>March quarter 1993</i>	n.p.	n.p.	5,799	15,270	82,433	97,703	1,281	2,330	3,611	1,500
<i>1994—</i>										
January	962	1,604	2,566	7,305	36,102	43,407	711	731	1,442	607
February	439	1,221	1,660	3,919	25,716	29,635	313	618	931	376
March	413	1,355	1,768	4,670	28,433	33,103	396	697	1,093	397
<i>March quarter 1994</i>	1,814	4,180	5,994	15,894	90,251	106,145	1,420	2,046	3,466	1,380
AVERAGE LENGTH OF STAY (days)										
<i>March quarter 1993</i>	n.p.	n.p.	5.3	11.2	6.2	7.0	7.8	4.2	5.5	3.3
<i>1994—</i>										
January	6.2	7.0	6.7	11.4	6.7	7.5	9.0	6.1	7.5	3.1
February	5.8	6.5	6.3	11.2	5.8	6.6	9.0	4.0	5.7	2.2
March	5.3	6.8	6.4	9.6	5.4	6.0	7.4	3.9	5.1	2.3
<i>March quarter 1994</i>	5.9	6.8	6.5	10.8	6.1	6.8	8.6	4.7	6.3	2.6
TAKINGS FROM ACCOMMODATION (\$'000)										
<i>March quarter 1993</i>	n.p.	n.p.	1,757	7,409	34,737	42,146	371	420	791	217
<i>1994—</i>										
January	206	764	970	4,678	19,757	24,435	277	222	499	107
February	61	553	614	1,512	9,641	11,152	77	102	179	37
March	52	621	673	1,576	9,631	11,208	78	108	185	42
<i>March quarter 1994</i>	319	1,938	2,257	7,766	39,029	46,796	432	431	863	186

TABLE 8 — HOLIDAY FLATS, UNITS AND HOUSES BY STATISTICAL DIVISION, QUEENSLAND—continued

Particulars	Mackay (SD)	Northern (SD)		Far North (SD)		Balance of State	Queensland		
	Total	Real estate agents	Other letting entities	Total	Total	Total	Real estate agents	Other letting entities	Total
LETTING ENTITIES, CAPACITY AND EMPLOYMENT									
<i>March quarter 1993—</i>									
Letting entities	22	2	26	28	71	1	87	505	592
Flats, units and houses									
Single bedroom	111	n.p.	n.p.	130	650	n.p.	288	3,163	3,451
Multiple bedroom	134	n.p.	n.p.	152	701	n.p.	4,247	8,099	12,346
<i>Total flats, units and houses</i>	<i>245</i>	<i>n.p.</i>	<i>n.p.</i>	<i>282</i>	<i>1,351</i>	<i>n.p.</i>	<i>4,535</i>	<i>11,262</i>	<i>15,797</i>
Bed spaces	1,051	n.p.	n.p.	1,275	5,030	n.p.	19,599	43,490	63,089
Employment (persons) (a)	76	n.p.	n.p.	56	272	n.p.	2	1,966	1,968
<i>March quarter 1994—</i>									
Letting entities	20	4	26	30	71	4	90	515	605
Flats, units and houses									
Single bedroom	93	3	127	130	637	24	257	3,240	3,497
Multiple bedroom	115	58	116	174	762	25	4,331	8,493	12,824
<i>Total flats, units and houses</i>	<i>208</i>	<i>61</i>	<i>243</i>	<i>304</i>	<i>1,399</i>	<i>49</i>	<i>4,588</i>	<i>11,733</i>	<i>16,321</i>
Bed spaces	926	326	1,048	1,374	5,387	308	20,456	45,534	65,990
Employment (persons) (a)	79	..	66	66	308	13	—	2,125	2,125
UNIT NIGHTS OCCUPIED									
<i>March quarter 1993</i>	<i>11,435</i> *	<i>n.p.</i>	<i>n.p.</i>	<i>9,559</i>	<i>54,075</i>	<i>n.p.</i>	<i>192,548</i>	<i>618,275</i>	<i>810,823</i>
<i>1994</i>									
January	4,271	698	4,171	4,869	21,889	888	96,681	291,378	388,059
February	2,669	106	2,246	2,352	15,867	596	49,747	182,666	232,413
March	3,159	114	2,531	2,645	19,687	722	50,465	191,946	242,411
<i>March quarter 1994</i>	<i>10,099</i>	<i>918</i>	<i>8,948</i>	<i>9,866</i>	<i>57,443</i>	<i>2,206</i>	<i>196,893</i>	<i>665,990</i>	<i>862,883</i>
UNIT OCCUPANCY RATES (per cent)									
<i>March quarter 1993</i>	<i>51.9</i>	<i>n.p.</i>	<i>n.p.</i>	<i>37.7</i>	<i>44.5</i>	<i>n.p.</i>	<i>47.2</i>	<i>61.0</i>	<i>57.0</i>
<i>1994—</i>									
January	66.2	36.9	55.4	51.7	50.5	58.5	68.0	80.1	76.7
February	46.5	6.2	33.0	27.6	40.8	43.4	38.7	55.7	50.9
March	50.4	6.0	33.6	28.1	45.6	47.5	35.5	52.9	48.0
<i>March quarter 1994</i>	<i>54.7</i>	<i>16.7</i>	<i>40.9</i>	<i>36.1</i>	<i>45.8</i>	<i>50.0</i>	<i>47.7</i>	<i>63.2</i>	<i>58.8</i>
UNIT LETTINGS									
<i>March quarter 1993</i>	<i>2,635</i>	<i>n.p.</i>	<i>n.p.</i>	<i>2,014</i>	<i>10,934</i>	<i>n.p.</i>	<i>20,073</i>	<i>104,326</i>	<i>124,399</i>
<i>1994</i>									
January	1,156	84	993	1,077	4,183	355	9,114	45,679	54,793
February	685	25	513	538	3,044	302	4,732	32,439	37,171
March	777	31	626	657	4,071	347	5,580	36,633	42,213
<i>March quarter 1994</i>	<i>2,618</i>	<i>140</i>	<i>2,132</i>	<i>2,272</i>	<i>11,298</i>	<i>1,004</i>	<i>19,426</i>	<i>114,751</i>	<i>134,177</i>
AVERAGE LENGTH OF STAY (days)									
<i>March quarter 1993</i>	<i>4.3</i>	<i>n.p.</i>	<i>n.p.</i>	<i>4.7</i>	<i>4.9</i>	<i>n.p.</i>	<i>9.6</i>	<i>5.9</i>	<i>6.5</i>
<i>1994—</i>									
January	3.7	8.3	4.2	4.5	5.2	2.5	10.6	6.4	7.1
February	3.9	4.2	4.4	4.4	5.2	2.0	10.5	5.6	6.3
March	4.1	3.7	4.0	4.0	4.8	2.1	9.0	5.2	5.7
<i>March quarter 1994</i>	<i>3.9</i>	<i>6.6</i>	<i>4.2</i>	<i>4.3</i>	<i>5.1</i>	<i>2.2</i>	<i>10.1</i>	<i>5.8</i>	<i>6.4</i>
TAKINGS FROM ACCOMMODATION (\$'000)									
<i>March quarter 1993</i>	<i>529</i>	<i>n.p.</i>	<i>n.p.</i>	<i>529</i>	<i>3,464</i>	<i>n.p.</i>	<i>8,204</i>	<i>41,258</i>	<i>49,462</i>
<i>1994—</i>									
January	268	35	243	278	1,634	39	5,229	23,002	28,231
February	134	4	111	114	1,228	23	1,676	11,805	13,481
March	168	5	137	142	1,553	31	1,741	12,261	14,002
<i>March quarter 1994</i>	<i>570</i>	<i>44</i>	<i>491</i>	<i>534</i>	<i>4,415</i>	<i>93</i>	<i>8,646</i>	<i>47,068</i>	<i>55,714</i>

(a) Employment numbers exclude real estate agents and their employees.

TABLE 9 — HOLIDAY FLATS, UNITS AND HOUSES: STATISTICAL DIVISIONS AND SELECTED

Statistical Divisions and Selected Subdivisions and Statistical Local Areas	Flats, units and houses				Bed spaces	Employment (persons) (a)	Unit nights occupied			
	Letting entities	Single bedroom	Multiple bedroom	Total			Jan.	Feb.	Mar.	Mar. qtr
Brisbane City Core (b)										
Spring Hill	3	47	50	97	343	19	2,164	1,773	2,726	6,663
Balance	4	24	40	64	242	11	1,647	1,337	1,547	4,531
Total	7	71	90	161	585	30	3,811	3,110	4,273	11,194
Brisbane City (SSD) — Balance	13	51	145	196	802	51	4,755	3,676	3,830	12,261
Brisbane City (SSD)	20	122	235	357	1,387	81	8,566	6,786	8,103	23,455
Redland (S) — Balance (c)	8	61	216	277	1,438	16	7,530	3,054	2,556	13,140
Redland (S)	4	4	54	58	247	2	1,178	677	732	2,587
Brisbane (SD)	32	187	505	692	3,072	99	17,274	10,517	11,391	39,182
Caboolture (S) — Pt B	7	4	264	268	1,320	5	6,143	3,116	2,653	11,912
Gold Coast City (SSD)										
Biggera Waters	4	15	96	111	457	9	2,795	1,673	1,890	6,358
Broadbeach	21	171	477	648	2,385	100	16,959	9,921	10,065	36,945
Burleigh Heads	26	125	773	898	3,506	110	22,953	13,006	14,170	50,129
Coolangatta	25	109	837	946	3,673	78	23,160	15,586	17,121	55,867
Currumbin	5	7	175	182	907	24	5,058	2,538	2,545	10,141
Labrador	5	10	43	53	202	10	1,343	741	1,041	3,125
Main Beach-Broadwater	12	12	215	227	933	36	5,743	2,333	2,792	10,868
Mermaid Beach	12	17	315	332	1,334	25	7,826	4,977	4,609	17,412
Miami	8	18	113	131	508	15	2,111	1,200	1,249	4,560
Palm Beach	13	67	311	378	1,479	37	8,848	4,850	4,190	17,888
Surfers Paradise	109	1,390	2,307	3,697	12,777	580	100,283	71,057	69,766	241,106
Tugun	7	9	237	246	994	16	6,069	3,502	3,854	13,425
Balance	5	20	58	78	287	15	1,567	677	985	3,229
Total	252*	1,970	5,957	7,927	29,442	1,055	204,715	132,061	134,277	471,053
Sunshine Coast Statistical District (d)										
Caloundra (C) — Part A	23	38	1,078	1,116	5,201	44	28,364	14,223	13,942	56,529
Maroochy (S) — Part A	46	105	1,396	1,501	6,556	137	36,319	17,769	18,688	72,776
Noosa (S) — Part A	68	204	1,880	2,084	8,802	206	47,605	25,483	26,840	99,928
Total	137	347	4,354	4,701	20,559	387	112,288	57,475	59,470	229,233
Balance	3	3	96	99	527	31	2,969	1,634	1,864	6,467
Moreton (SD)	399	2,324	10,671	12,995	51,848	1,478	326,115	194,286	198,264	718,665
Hervey Bay (C)	29	34	374	408	1,877	45	7,832	4,101	4,383	16,316
Widgee (S)	3	5	88	93	519	—	1,174	312	344	1,830
Woongarra (S) — Parts A and B	4	7	50	57	216	8	1,139	621	602	2,362
Balance	3	6	21	27	118	7	715	259	298	1,272
Wide Bay-Burnett (SD)	39	52	533	585	2,730	60	10,860	5,293	5,627	21,780
Fitzroy (SD)	10	50	39	89	345	22	1,893	833	916	3,642
Whitsunday (S)	15	78	51	129	513	53	2,380	1,382	1,716	5,478
Balance	5	15	64	79	413	26	1,891	1,287	1,443	4,621
Mackay (SD)	20	93	115	208	926	79	4,271	2,669	3,159	10,099
Bowen (S)	7	41	24	65	282	22	755	349	397	1,501
Townsville City (SSD)										
Magnetic Island	13	51	89	140	656	19	1,935	494	770	3,199
North Ward-Castle Hill	6	11	42	53	229	14	1,203	1,059	1,045	3,307
Balance	3	18	19	37	153	10	775	394	375	1,544
Total	22	80	150	230	1,038	43	3,913	1,947	2,190	8,050
Balance	8	50	24	74	336	23	956	405	455	1,816
Northern (SD)	30	130	174	304	1,374	66	4,869	2,352	2,645	9,866
Cairns (C)	23	307	315	622	2,284	84	9,907	7,553	9,019	26,479
Douglas (S)	21	89	227	316	1,280	64	5,011	3,520	3,898	12,429
Mulgrave (S) — Parts A and B	20	228	166	394	1,500	143	6,287	4,568	6,434	17,289
Balance	7	13	54	67	323	17	684	226	336	1,246
Far North (SD)	71	637	762	1,399	5,387	308	21,889	15,867	19,687	57,443
Balance of State	4	24	25	49	308	13	888	596	722	2,206
Queensland	605	3,497	12,824	16,321	65,990	2,125	388,059	232,413	242,411	862,883

(a) Employment numbers exclude real estate agents and their employees. (b) Brisbane City Core comprises the suburbs of Bowen Hills, City, Dutton Park, Fortitude Valley, Herston, Highgate Hill, Kangaroo Point, Kelvin Grove, Milton, New Farm, Newstead, Paddington, Red Hill, South Brisbane, Spring Hill, West End and Woollongabba. (c) Redland (S) Balance comprises properties on North Stradbroke and Coochiemudlo Islands. (d) Sunshine Coast Statistical District comprises the more urban coastal portions of Caloundra City and Maroochy and Noosa Shires.

## SUBDIVISIONS AND STATISTICAL LOCAL AREAS, QUEENSLAND, MARCH QUARTER 1994

Unit occupancy rates (per cent)				Unit lettings				Average length of stay (days)	Takings from accommodation (\$'000)			
Jan.	Feb.	Mar.	Mar. qtr	Jan.	Feb.	Mar.	Mar. qtr	Mar. qtr	Jan.	Feb.	Mar.	Mar. qtr
72.0	65.3	90.7	76.3	278	205	211	694	9.6	176	141	210	527
83.0	74.6	78.0	78.7	190	164	176	530	8.5	107	73	94	274
76.4	69.0	85.6	77.3	468	369	387	1,224	9.1	283	214	304	800
78.3	67.0	63.0	69.5	657	500	602	1,759	7.0	304	259	248	811
77.4	67.9	73.2	73.0	1,125	869	989	2,983	7.9	587	472	552	1,611
87.7	39.4	29.8	52.7	1,300	719	675	2,694	4.9	342	120	98	560
65.5	41.7	40.7	49.6	141	72	104	317	8.2	41	21	23	86
80.5	54.3	53.1	62.9	2,566	1,660	1,768	5,994	6.5	970	614	673	2,257
73.9	41.5	31.9	49.4	676	376	416	1,468	8.1	270	80	111	461
81.2	53.8	54.9	63.6	476	302	354	1,132	5.6	228	118	139	485
84.4	54.7	50.1	63.3	2,883	1,999	2,448	7,330	5.0	1,371	677	780	2,828
82.5	51.7	50.9	62.0	2,681	1,671	1,933	6,285	8.0	1,782	718	752	3,252
79.0	58.9	58.4	65.7	2,309	1,723	2,017	6,049	9.2	1,550	820	823	3,193
89.6	49.8	45.1	61.9	664	368	419	1,451	7.0	358	135	121	615
81.7	49.9	63.4	65.5	125	64	77	266	11.7	70	24	29	123
81.6	37.3	40.4	53.8	806	360	448	1,614	6.7	542	183	239	964
76.0	53.5	44.8	58.3	749	494	539	1,782	9.8	374	183	154	711
52.0	32.7	30.8	38.7	356	234	190	780	5.8	157	57	59	273
75.5	45.8	35.8	52.6	1,070	600	615	2,285	7.8	641	285	217	1,143
87.5	68.6	60.9	72.5	15,142	11,921	12,166	39,229	6.1	8,013	4,599	4,557	17,169
79.6	50.8	50.5	60.6	909	497	521	1,927	7.0	432	170	185	787
64.8	31.0	40.7	46.0	312	153	204	669	4.8	119	40	64	223
83.3	59.5	54.7	66.1	28,482	20,386	21,931	70,799	6.7	15,638	8,009	8,119	31,766
82.0	45.5	40.3	56.3	2,527	1,297	1,701	5,525	10.2	1,651	399	391	2,440
78.1	42.3	40.2	53.9	4,467	2,606	3,204	10,277	7.1	2,647	936	857	4,440
73.7	43.7	41.5	53.3	6,750	4,609	5,441	16,800	5.9	3,948	1,616	1,592	7,156
77.1	43.7	40.8	54.2	13,744	8,512	10,346	32,602	7.0	8,246	2,950	2,841	14,037
96.7	67.1	69.3	78.9	505	361	410	1,276	5.1	282	113	137	532
81.0	53.5	49.3	61.5	43,407	29,635	33,103	106,145	6.8	24,435	11,152	11,208	46,796
61.9	35.9	34.7	44.4	1,063	745	881	2,689	6.1	348	138	141	628
40.7	12.0	11.9	21.9	168	55	68	291	6.3	62	10	11	84
64.5	38.9	34.1	46.0	134	78	90	302	7.8	64	23	25	112
85.4	34.3	35.6	52.3	77	53	54	184	6.9	25	7	8	40
59.9	32.3	31.0	41.4	1,442	931	1,093	3,466	6.3	499	179	185	863
68.6	33.4	33.2	45.5	607	376	397	1,380	2.6	107	37	42	186
59.5	38.3	42.9	47.2	762	467	560	1,789	3.1	164	83	105	351
77.2	60.5	63.8	67.6	394	218	217	829	5.6	105	51	63	219
66.2	46.5	50.4	54.7	1,156	685	777	2,618	3.9	268	134	168	570
37.5	19.2	19.7	25.7	239	135	165	539	2.8	38	15	17	70
44.6	12.6	17.7	25.4	392	148	238	778	4.1	105	24	41	171
73.2	71.4	63.6	69.3	225	156	142	523	6.3	62	41	52	154
67.6	38.0	32.7	46.4	183	78	90	351	4.4	63	32	30	124
54.9	30.2	30.7	38.9	800	382	470	1,652	4.9	230	97	123	449
41.7	19.5	19.8	27.3	277	156	187	620	2.9	48	17	20	85
51.7	27.6	28.1	36.1	1,077	538	657	2,272	4.3	278	114	142	534
51.4	43.7	47.0	47.5	1,872	1,428	1,788	5,088	5.2	634	473	565	1,673
51.2	39.8	39.8	43.7	873	539	728	2,140	5.8	328	223	279	830
51.5	41.8	53.2	49.1	1,258	1,001	1,421	3,680	4.7	622	513	674	1,809
32.9	12.0	16.2	20.7	180	76	134	390	3.2	50	19	35	104
50.5	40.8	45.6	45.8	4,183	3,044	4,071	11,298	5.1	1,634	1,228	1,553	4,415
58.5	43.4	47.5	50.0	355	302	347	1,004	2.2	39	23	31	93
76.7	50.9	48.0	58.8	54,793	37,171	42,213	134,177	6.4	28,231	13,481	14,002	55,714

TABLE 10 — CARAVAN PARKS BY STATISTICAL DIVISION, QUEENSLAND

Particulars	Brisbane (SD)			Moreton (SD)			Wide Bay-Burnett (SD)		
	Short-term	Long-term	Total	Short-term	Long-term	Total	Short-term	Long-term	Total
ESTABLISHMENTS, CAPACITY AND EMPLOYMENT									
<i>March quarter 1993—</i>									
Establishments	9	68	77	35	77	112	33	60	93
Capacity									
On-site vans	102	1,172	1,274	121	1,009	1,130	174	506	680
Other powered sites	275	5,249	5,524	3,209	5,125	8,334	2,239	2,554	4,793
Unpowered sites	1,118	435	1,553	2,195	1,075	3,270	1,198	769	1,967
Cabins, flats, etc.	32	480	512	192	576	768	155	267	422
<i>Total capacity</i>	<i>1,527</i>	<i>7,336</i>	<i>8,863</i>	<i>5,717</i>	<i>7,785</i>	<i>13,502</i>	<i>3,766</i>	<i>4,096</i>	<i>7,862</i>
Sites occupied by long-term guests	166	5,099	5,265	559	3,875	4,434	317	1,382	1,699
Other sites permanently reserved	158	73	231	237	300	537	77	148	225
Employment (persons)	23	340	363	162	320	482	100	167	267
<i>March quarter 1994—</i>									
Establishments	8	68	76	34	78	112	36	59	95
Capacity									
On-site vans	42	1,355	1,397	99	1,045	1,144	173	510	683
Other powered sites	259	5,040	5,299	3,189	5,040	8,229	2,304	2,527	4,831
Unpowered sites	902	430	1,332	2,078	1,082	3,160	1,266	706	1,972
Cabins, flats, etc.	28	542	570	211	562	773	200	267	467
<i>Total capacity</i>	<i>1,231</i>	<i>7,367</i>	<i>8,598</i>	<i>5,577</i>	<i>7,729</i>	<i>13,306</i>	<i>3,943</i>	<i>4,010</i>	<i>7,953</i>
Sites occupied by long-term guests	94	5,036	5,130	469	3,844	4,313	359	1,278	1,637
Other sites permanently reserved	176	63	239	289	237	526	126	72	198
Employment (persons)	21	350	371	172	330	502	105	186	291
SITE NIGHTS OCCUPIED									
<i>March quarter 1993</i>	<i>42,710</i>	<i>500,925</i>	<i>543,635</i>	<i>190,866</i>	<i>438,656</i>	<i>629,522</i>	<i>90,994</i>	<i>161,376</i>	<i>252,370</i>
<i>1994—</i>									
January	16,742	171,329	188,071	97,942	164,861	262,803	47,508	55,227	102,735
February	11,011	154,606	165,617	44,721	135,916	180,637	27,722	47,897	75,619
March	11,293	170,109	181,402	53,098	149,704	202,802	32,148	52,847	84,995
<i>March quarter 1994</i>	<i>39,046</i>	<i>496,044</i>	<i>535,090</i>	<i>195,761</i>	<i>450,481</i>	<i>646,242</i>	<i>107,378</i>	<i>155,971</i>	<i>263,349</i>
SITE OCCUPANCY RATES (per cent)									
March quarter 1993	31.1	75.9	68.2	37.1	62.6	51.8	26.8	43.8	35.7
<i>1994—</i>									
January	43.9	75.0	70.6	56.7	68.8	63.7	38.9	44.4	41.7
February	34.6	75.0	69.6	28.6	62.8	48.5	25.1	42.7	34.0
March	32.1	74.5	68.8	30.7	62.5	49.2	26.3	42.5	34.5
March quarter 1994	37.1	74.8	69.7	39.0	64.8	54.0	30.3	43.2	36.8
TAKINGS FROM ACCOMMODATION (\$'000)									
<i>March quarter 1993</i>	<i>377</i>	<i>4,393</i>	<i>4,769</i>	<i>2,331</i>	<i>4,281</i>	<i>6,612</i>	<i>952</i>	<i>1,299</i>	<i>2,250</i>
<i>1994—</i>									
January	151	1,543	1,694	1,262	1,869	3,131	545	491	1,036
February	80	1,416	1,495	502	1,340	1,842	268	393	661
March	99	1,623	1,722	659	1,491	2,149	314	430	743
<i>March quarter 1994</i>	<i>329</i>	<i>4,582</i>	<i>4,912</i>	<i>2,423</i>	<i>4,700</i>	<i>7,122</i>	<i>1,127</i>	<i>1,314</i>	<i>2,440</i>

TABLE 10—CARAVAN PARKS BY STATISTICAL DIVISION, QUEENSLAND—continued

Particulars	Darling Downs (SD)			South-West (SD)			Fitzroy (SD)		
	Short-term	Long-term	Total	Short-term	Long-term	Total	Short-term	Long-term	Total
<b>ESTABLISHMENTS, CAPACITY AND EMPLOYMENT</b>									
<i>March quarter 1993—</i>									
Establishments	14	30	44	9	9	18	31	38	69
Capacity									
On-site vans	92	256	348	32	57	89	91	515	606
Other powered sites	323	839	1,162	140	238	378	946	2,107	3,053
Unpowered sites	408	437	845	384	70	454	717	449	1,166
Cabins, flats, etc.	47	76	123	20	13	33	126	217	343
<i>Total capacity</i>	<i>870</i>	<i>1,608</i>	<i>2,478</i>	<i>576</i>	<i>378</i>	<i>954</i>	<i>1,880</i>	<i>3,288</i>	<i>5,168</i>
Sites occupied by long-term guests	51	504	555	14	100	114	165	1,219	1,384
Other sites permanently reserved	1	10	11	3	1	4	30	31	61
Employment (persons)	30	79	109	19	13	32	97	154	251
<i>March quarter 1994—</i>									
Establishments	13	31	44	7	10	17	34	37	71
Capacity									
On-site vans	73	253	326	29	62	91	121	479	600
Other powered sites	316	911	1,227	115	234	349	1,080	1,961	3,041
Unpowered sites	404	427	831	197	78	275	772	368	1,140
Cabins, flats, etc.	48	89	137	2	17	19	146	243	389
<i>Total capacity</i>	<i>841</i>	<i>1,680</i>	<i>2,521</i>	<i>343</i>	<i>391</i>	<i>734</i>	<i>2,119</i>	<i>3,051</i>	<i>5,170</i>
Sites occupied by long-term guests	63	423	486	12	96	108	201	1,104	1,305
Other sites permanently reserved	2	12	14	1	7	8	28	24	52
Employment (persons)	29	73	102	15	13	28	113	149	262
<b>SITE NIGHTS OCCUPIED</b>									
<i>March quarter 1993</i>	<i>17,311</i>	<i>55,814</i>	<i>73,125</i>	<i>3,579</i>	<i>10,319</i>	<i>13,898</i>	<i>34,566</i>	<i>132,423</i>	<i>166,989</i>
<i>1994—</i>									
January	6,170	16,938	23,108	697	3,801	4,498	17,105	43,517	60,622
February	5,643	15,396	21,039	621	3,378	3,999	12,337	37,325	49,662
March	6,408	17,614	24,022	855	4,033	4,888	13,707	41,935	55,642
<i>March quarter 1994</i>	<i>18,221</i>	<i>49,948</i>	<i>68,169</i>	<i>2,173</i>	<i>11,212</i>	<i>13,385</i>	<i>43,149</i>	<i>122,777</i>	<i>165,926</i>
<b>SITE OCCUPANCY RATES (per cent)</b>									
<i>March quarter 1993</i>	<i>22.1</i>	<i>38.6</i>	<i>32.8</i>	<i>6.9</i>	<i>30.3</i>	<i>16.2</i>	<i>20.4</i>	<i>44.7</i>	<i>35.9</i>
<i>1994—</i>									
January	23.7	32.5	29.6	6.6	31.4	19.8	26.0	46.0	37.8
February	24.0	32.7	29.8	6.5	30.9	19.5	20.8	43.7	34.3
March	24.6	33.8	30.7	8.0	33.3	21.5	20.9	44.3	34.7
<i>March quarter 1994</i>	<i>24.1</i>	<i>33.0</i>	<i>30.0</i>	<i>7.0</i>	<i>31.9</i>	<i>20.3</i>	<i>22.6</i>	<i>44.7</i>	<i>35.7</i>
<b>TAKINGS FROM ACCOMMODATION (\$'000)</b>									
<i>March quarter 1993</i>	<i>181</i>	<i>473</i>	<i>654</i>	<i>41</i>	<i>85</i>	<i>126</i>	<i>386</i>	<i>1,153</i>	<i>1,539</i>
<i>1994—</i>									
January	61	156	217	6	34	40	203	433	636
February	53	139	192	6	28	34	132	356	488
March	69	154	223	9	33	42	151	417	567
<i>March quarter 1994</i>	<i>183</i>	<i>449</i>	<i>632</i>	<i>21</i>	<i>95</i>	<i>116</i>	<i>486</i>	<i>1,206</i>	<i>1,691</i>

TABLE 10 — CARAVAN PARKS BY STATISTICAL DIVISION, QUEENSLAND—continued

Particulars	Central-West (SD)			Mackay (SD)			Northern (SD)		
	Short-term	Long-term	Total	Short-term	Long-term	Total	Short-term	Long-term	Total
ESTABLISHMENTS, CAPACITY AND EMPLOYMENT									
<i>March quarter 1993—</i>									
Establishments	9	—	9	15	30	45	14	29	43
Capacity									
On-site vans	54	—	54	109	244	353	130	299	429
Other powered sites	278	—	278	447	1,686	2,133	666	1,415	2,081
Unpowered sites	254	—	254	232	483	715	314	414	728
Cabins, flats, etc.	42	—	42	126	109	235	60	147	207
<i>Total capacity</i>	<i>628</i>	<i>—</i>	<i>628</i>	<i>914</i>	<i>2,522</i>	<i>3,436</i>	<i>1,170</i>	<i>2,275</i>	<i>3,445</i>
Sites occupied by long-term guests	30	—	30	74	742	816	101	800	901
Other sites permanently reserved	3	—	3	5	11	16	7	14	21
Employment (persons)	19	—	19	55	89	144	52	95	147
<i>March quarter 1994—</i>									
Establishments	10	—	10	17	28	45	15	29	44
Capacity									
On-site vans	50	—	50	118	241	359	123	257	380
Other powered sites	322	—	322	506	1,677	2,183	624	1,484	2,108
Unpowered sites	371	—	371	244	442	686	251	513	764
Cabins, flats, etc.	41	—	41	137	118	255	81	129	210
<i>Total capacity</i>	<i>784</i>	<i>—</i>	<i>784</i>	<i>1,005</i>	<i>2,478</i>	<i>3,483</i>	<i>1,079</i>	<i>2,383</i>	<i>3,462</i>
Sites occupied by long-term guests	20	—	20	77	714	791	119	802	921
Other sites permanently reserved	2	—	2	8	5	13	8	18	26
Employment (persons)	22	—	22	59	82	141	61	96	157
SITE NIGHTS OCCUPIED									
<i>March quarter 1993</i>	<i>4,475</i>	<i>—</i>	<i>4,475</i>	<i>20,577</i>	<i>79,119</i>	<i>99,696</i>	<i>23,312</i>	<i>82,484</i>	<i>105,796</i>
<i>1994—</i>									
January	1,457	—	1,457	10,521	28,869	39,390	8,480	28,413	36,893
February	1,087	—	1,087	6,553	23,878	30,431	6,318	26,667	32,985
March	1,619	—	1,619	7,672	26,831	34,503	7,632	29,992	37,624
<i>March quarter 1994</i>	<i>4,163</i>	<i>—</i>	<i>4,163</i>	<i>24,746</i>	<i>79,578</i>	<i>104,324</i>	<i>22,430</i>	<i>85,072</i>	<i>107,502</i>
SITE OCCUPANCY RATES (per cent)									
March quarter 1993	7.9	—	7.9	25.0	34.9	32.2	22.1	40.3	34.1
<i>1994—</i>									
January	6.0	—	6.0	33.8	37.6	36.5	25.4	38.5	34.4
February	5.0	—	5.0	23.3	34.4	31.2	20.9	40.0	34.0
March	6.7	—	6.7	24.6	34.9	32.0	22.8	40.6	35.1
March quarter 1994	5.9	—	5.9	27.4	35.7	33.3	23.1	39.7	34.5
TAKINGS FROM ACCOMMODATION (\$'000)									
<i>March quarter 1993</i>	<i>80</i>	<i>—</i>	<i>80</i>	<i>347</i>	<i>656</i>	<i>1,003</i>	<i>265</i>	<i>806</i>	<i>1,071</i>
<i>1994—</i>									
January	23	—	23	168	244	412	110	286	396
February	19	—	19	110	207	318	86	266	351
March	29	—	29	131	226	356	104	304	408
<i>March quarter 1994</i>	<i>71</i>	<i>—</i>	<i>71</i>	<i>409</i>	<i>676</i>	<i>1,086</i>	<i>299</i>	<i>856</i>	<i>1,155</i>



TABLE 10 — CARAVAN PARKS BY STATISTICAL DIVISION, QUEENSLAND—continued

Particulars	Far North (SD)			North-West (SD)			Queensland		
	Short-term	Long-term	Total	Short-term	Long-term	Total	Short-term	Long-term	Total
<b>ESTABLISHMENTS, CAPACITY AND EMPLOYMENT</b>									
<i>March quarter 1993—</i>									
Establishments	46	48	94	10	12	22	225	401	626
Capacity									
On-site vans	209	446	655	18	82	100	1,132	4,586	5,718
Other powered sites	1,705	2,059	3,764	339	652	991	10,567	21,924	32,491
Unpowered sites	1,437	1,016	2,453	235	129	364	8,492	5,277	13,769
Cabins, flats, etc.	277	313	590	39	16	55	1,116	2,214	3,330
<i>Total capacity</i>	<i>3,628</i>	<i>3,834</i>	<i>7,462</i>	<i>631</i>	<i>879</i>	<i>1,510</i>	<i>21,307</i>	<i>34,001</i>	<i>55,308</i>
Sites occupied by long-term guests	308	1,050	1,358	34	348	382	1,819	15,119	16,938
Other sites permanently reserved	25	67	92	—	2	2	546	657	1,203
Employment (persons)	158	152	310	23	25	48	738	1,434	2,172
<i>March quarter 1994—</i>									
Establishments	46	46	92	12	11	23	232	397	629
Capacity									
On-site vans	207	487	694	27	74	101	1,062	4,763	5,825
Other powered sites	1,737	1,907	3,644	379	643	1,022	10,831	21,424	32,255
Unpowered sites	1,486	883	2,369	290	233	523	8,261	5,162	13,423
Cabins, flats, etc.	309	323	632	40	18	58	1,243	2,308	3,551
<i>Total capacity</i>	<i>3,739</i>	<i>3,600</i>	<i>7,339</i>	<i>736</i>	<i>968</i>	<i>1,704</i>	<i>21,397</i>	<i>33,657</i>	<i>55,054</i>
Sites occupied by long-term guests	326	1,045	1,371	29	317	346	1,769	14,659	16,428
Other sites permanently reserved	30	59	89	5	—	5	675	497	1,172
Employment (persons)	170	155	325	39	24	63	806	1,458	2,264
<b>SITE NIGHTS OCCUPIED</b>									
<i>March quarter 1993</i>	<i>57,739</i>	<i>121,503</i>	<i>179,242</i>	<i>5,168</i>	<i>34,458</i>	<i>39,626</i>	<i>491,297</i>	<i>1,617,077</i>	<i>2,108,374</i>
<i>1994—</i>									
January	24,493	42,975	67,468	1,752	10,479	12,231	232,867	566,409	799,276
February	18,831	38,579	57,410	1,815	9,886	11,701	136,659	493,528	630,187
March	21,265	43,241	64,506	2,204	11,312	13,516	157,901	547,618	705,519
<i>March quarter 1994</i>	<i>64,589</i>	<i>124,795</i>	<i>189,384</i>	<i>5,771</i>	<i>31,677</i>	<i>37,448</i>	<i>527,427</i>	<i>1,607,555</i>	<i>2,134,982</i>
<b>SITE OCCUPANCY RATES (per cent)</b>									
<i>March quarter 1993</i>	<i>17.7</i>	<i>35.2</i>	<i>26.7</i>	<i>9.1</i>	<i>43.6</i>	<i>29.2</i>	<i>25.6</i>	<i>52.8</i>	<i>42.4</i>
<i>1994—</i>									
January	21.1	38.5	29.7	7.7	34.9	23.2	35.1	54.3	46.8
February	18.0	38.3	27.9	8.8	36.5	24.5	22.9	52.4	41.0
March	18.3	38.7	28.4	9.7	37.7	25.6	23.9	52.5	41.4
<i>March quarter 1994</i>	<i>19.2</i>	<i>38.5</i>	<i>28.7</i>	<i>8.7</i>	<i>36.4</i>	<i>24.4</i>	<i>27.5</i>	<i>53.1</i>	<i>43.1</i>
<b>TAKINGS FROM ACCOMMODATION (\$'000)</b>									
<i>March quarter 1993</i>	<i>717</i>	<i>1,257</i>	<i>1,974</i>	<i>57</i>	<i>361</i>	<i>419</i>	<i>5,734</i>	<i>14,763</i>	<i>20,497</i>
<i>1994—</i>									
January	339	482	821	20	105	124	2,890	5,641	8,531
February	226	430	656	23	99	122	1,504	4,673	6,178
March	303	486	788	25	116	141	1,891	5,279	7,170
<i>March quarter 1994</i>	<i>869</i>	<i>1,397</i>	<i>2,265</i>	<i>68</i>	<i>319</i>	<i>387</i>	<i>6,285</i>	<i>15,594</i>	<i>21,878</i>

TABLE 11 — CARAVAN PARKS: STATISTICAL DIVISIONS AND SELECTED SUBDIVISIONS

Statistical Divisions and Selected Subdivisions and Statistical Local Areas	Capacity					Total	Sites occupied by long-term guests	Other sites permanently reserved	Employment (persons)
	Establishments	On-site vans	Other powered sites	Unpowered sites	Cabins, flats, etc.				
<b>Brisbane City (SSD)</b>									
Aspley	3	87	410	2	71	570	404		31
Eight Mile Plains	4	220	414	35	57	726	424	28	27
Balance	17	317	1,760	39	103	2,219	1,513	3	140
<i>Total</i>	<i>24</i>	<i>624</i>	<i>2,584</i>	<i>76</i>	<i>231</i>	<i>3,515</i>	<i>2,341</i>	<i>31</i>	<i>198</i>
Beenleigh	4	30	348	34	15	427	264		18
Caboolture (S) — Part A	5	139	358	17	10	524	380	1	15
Ipswich (C)	4	125	261		45	431	338		20
Logan City (SSD)	12	255	701	80	114	1,150	846	3	50
Redcliffe City (SSD)	10	63	338	33	23	457	309	7	26
Redland Shire (SSD)	13	73	472	1,072	47	1,664	298	197	30
Balance	4	88	237	20	85	430	354		14
<i>Brisbane (SD)</i>	<i>76</i>	<i>1,397</i>	<i>5,299</i>	<i>1,332</i>	<i>570</i>	<i>8,598</i>	<i>5,130</i>	<i>239</i>	<i>371</i>
Beaudesert (S) — Part B	4	27	129	132	21	309	71		23
Boonah (S)	4	7	136	459		602	14		6
Caboolture (S) — Part B	8	50	856	45	39	990	466	146	38
Caloundra (C) — Parts A and B	17	111	844	348	125	1,428	502	99	61
Esk (S)	4	29	139	160	8	336	38	5	7
Gatton (S)	3	62	174	42	5	283	76		6
<b>Gold Coast City (SSD)</b>									
Coombah	3		407		3	410	346		16
Labrador	4	71	381	205	55	712	268		27
Balance	14	180	1,957	176	151	2,464	814	114	79
<i>Total</i>	<i>21</i>	<i>251</i>	<i>2,745</i>	<i>381</i>	<i>209</i>	<i>3,586</i>	<i>1,428</i>	<i>114</i>	<i>122</i>
Maroochy (S) — Parts A and B	25	203	1,792	489	194	2,678	712	95	109
Noosa (S) — Parts A and B	13	77	500	967	81	1,625	156	56	74
Balance	13	327	914	137	91	1,469	850	11	56
<i>Moreton (SD)</i>	<i>112</i>	<i>1,144</i>	<i>8,229</i>	<i>3,160</i>	<i>773</i>	<i>13,306</i>	<i>4,373</i>	<i>526</i>	<i>502</i>
Bundaberg (C)	7	105	455	9	102	671	262	16	24
Gooburrum (S) — Parts A and B	3	16	167	146	18	347	80	2	8
Gympie (C) and Widgee (S)	10	96	574	389	44	1,103	146	52	38
Hervey Bay (C)	25	163	1,763	357	146	2,429	632	33	89
Isis (S)	3	29	144	14	17	204	40	6	14
Maryborough (C)	9	63	266	181	37	547	158	19	23
Miniam Vale (S)	6	28	202	92	30	352	33	44	17
Nanango (S)	5	58	127	24	11	215	30	4	9
Woongarra (S) — Parts A and B	7	32	623	292	10	957	170		21
Balance	20	93	515	468	52	1,128	86	22	48
<i>Wide Bay-Burnett (SD)</i>	<i>95</i>	<i>683</i>	<i>4,831</i>	<i>1,972</i>	<i>467</i>	<i>7,953</i>	<i>1,637</i>	<i>198</i>	<i>291</i>
Goondiwindi (T)	3	25	90	20	31	166	39		7
Inglewood (S)	5	17	105	29	8	159	13	2	8
Murilla (S)	4	20	84	50	2	156	19		7
Stanthorpe (S)	3	52	141	269	16	478	54		9
Toowoomba (C)	5	64	271	46	24	405	192		20
Warwick (C)	3	25	100	126	29	280	32	5	7
Balance	21	123	436	291	27	877	137	7	44
<i>Darling Downs (SD)</i>	<i>44</i>	<i>326</i>	<i>1,227</i>	<i>831</i>	<i>137</i>	<i>2,521</i>	<i>486</i>	<i>14</i>	<i>102</i>
Roma (T)	3	31	89	40	8	168	53	4	6
Balance	14	60	260	235	11	566	55	4	22
<i>South-West (SD)</i>	<i>17</i>	<i>91</i>	<i>349</i>	<i>275</i>	<i>19</i>	<i>734</i>	<i>108</i>	<i>8</i>	<i>28</i>

## AND STATISTICAL LOCAL AREAS, QUEENSLAND, MARCH QUARTER 1994

<i>Site nights occupied</i>				<i>Site occupancy rates (per cent)</i>				<i>Takings from accommodation (\$'000)</i>			
<i>Jan.</i>	<i>Feb.</i>	<i>Mar.</i>	<i>Mar. qtr</i>	<i>Jan.</i>	<i>Feb.</i>	<i>Mar.</i>	<i>Mar. qtr</i>	<i>Jan.</i>	<i>Feb.</i>	<i>Mar.</i>	<i>Mar. qtr</i>
13,589	12,095	13,484	39,168	76.9	75.8	76.3	76.4	153	131	147	431
17,374	15,613	17,068	50,055	77.2	76.8	75.8	76.6	180	171	182	534
51,244	47,221	50,916	149,381	74.5	76.0	74.0	74.8	483	454	519	1,456
82,207	74,929	81,468	238,604	75.4	76.1	74.8	75.4	816	756	849	2,421
9,097	8,050	9,284	26,431	68.7	67.3	70.1	68.8	59	54	101	214
12,290	10,987	12,764	36,041	75.7	74.9	78.6	76.4	111	105	123	339
11,274	10,479	11,257	33,010	84.4	86.8	84.3	85.1	98	96	100	293
28,525	25,478	28,202	82,205	80.0	79.1	79.1	79.4	229	204	228	662
10,735	9,875	10,735	31,345	75.8	77.2	75.8	76.2	86	79	89	254
22,778	15,468	16,395	54,641	44.2	35.2	33.7	37.9	192	107	127	426
11,165	10,351	11,297	32,813	83.8	86.0	84.7	84.8	103	95	104	302
188,071	165,617	181,402	535,090	70.6	69.6	68.8	69.7	1,694	1,495	1,722	4,912
3,936	2,749	3,226	9,911	41.1	31.8	33.7	35.6	41	26	31	97
3,195	2,717	3,069	8,981	17.1	16.1	16.4	16.6	8	4	8	20
24,974	19,767	20,863	65,604	81.4	71.3	68.0	73.6	257	171	178	606
32,885	21,393	23,617	77,895	74.3	53.5	53.4	60.6	398	211	233	842
1,574	1,348	1,521	4,443	15.1	14.3	14.6	14.7	14	12	14	39
2,442	2,203	2,399	7,044	27.8	27.8	27.3	27.7	24	19	26	68
11,625	10,988	11,619	34,232	91.5	95.7	91.4	92.8	90	83	86	259
13,593	9,871	10,776	34,240	61.6	49.5	48.8	53.4	207	131	150	488
55,350	36,613	41,508	133,471	72.5	53.1	54.3	60.2	801	397	459	1,657
80,568	57,472	63,903	201,943	72.5	57.2	57.5	62.6	1,098	611	694	2,404
61,150	35,115	40,893	137,158	73.7	46.8	49.3	56.9	691	381	515	1,587
21,233	10,634	13,181	45,048	42.1	23.4	26.2	30.8	273	130	149	552
30,846	27,239	30,130	88,215	67.7	66.2	66.2	66.7	326	277	303	906
262,803	180,637	202,802	646,242	63.7	48.5	49.2	54.0	3,131	1,842	2,149	7,122
12,300	11,364	12,219	35,883	59.1	60.5	58.7	59.4	123	111	114	348
8,070	6,943	7,745	22,758	75.0	71.5	72.0	72.9	50	34	37	121
12,169	8,888	9,890	30,947	35.6	28.8	28.9	31.2	126	70	83	280
36,791	24,297	27,752	88,840	48.9	35.7	36.9	40.6	398	224	259	882
3,590	2,240	2,600	8,430	56.8	39.2	41.1	45.9	43	26	30	98
6,481	5,835	6,452	18,768	38.2	38.1	38.0	38.1	61	47	53	161
4,584	3,154	3,412	11,150	42.0	32.0	31.3	35.2	52	33	38	124
1,566	1,464	1,609	4,639	23.5	24.3	24.1	24.0	14	13	14	41
11,099	6,828	7,453	25,380	37.4	25.5	25.1	29.5	111	63	64	238
6,085	4,606	5,863	16,554	17.4	14.6	16.8	16.3	56	40	50	147
102,735	75,619	84,995	263,349	41.7	34.0	34.5	36.8	1,036	661	743	2,440
1,574	1,443	1,821	4,838	30.6	31.0	35.4	32.4	21	17	19	57
531	484	564	1,579	10.8	10.9	11.4	11.0	3	3	3	9
932	964	972	2,868	19.3	22.1	20.1	20.4	7	7	8	22
5,005	4,774	5,109	14,888	33.8	35.7	34.5	34.6	48	45	54	147
7,637	7,020	7,794	22,451	60.8	61.9	62.1	61.6	77	67	74	218
2,084	1,488	2,227	5,799	24.0	19.0	25.7	23.0	20	15	22	57
5,345	4,866	5,535	15,746	19.7	19.8	20.4	19.9	40	37	43	121
23,108	21,039	24,022	68,169	29.6	29.8	30.7	30.0	217	192	223	632
2,099	1,909	2,188	6,196	40.3	40.6	42.0	41.0	18	15	19	52
2,399	2,090	2,700	7,189	13.7	13.2	15.4	14.1	23	18	23	64
4,498	3,999	4,888	13,385	19.8	19.5	21.5	20.3	40	34	42	116

TABLE 11 — CARAVAN PARKS: STATISTICAL DIVISIONS AND SELECTED SUBDIVISIONS

Statistical Divisions and Selected Subdivisions and Statistical Local Areas	Capacity					Total	Sites occupied by long-term guests	Other sites permanently reserved	Employment (persons)
	Establishments	On-site vans	Other powered sites	Unpowered sites	Cabins, flats, etc.				
Banana (S)	8	101	251	126	18	496	81	—	29
Calliope (S) — Parts A and B	9	57	515	217	26	815	186	14	28
Emerald (S)	14	110	492	212	78	892	210	7	51
Gladstone (C)	7	80	282	49	42	453	254	—	24
Livingstone (S)	11	49	477	281	71	878	182	26	37
Rockhampton (C)	7	108	540	105	134	887	251	3	55
Balance	15	95	484	150	20	749	141	2	38
<i>Fitzroy (SD)</i>	<i>71</i>	<i>600</i>	<i>3,041</i>	<i>1,140</i>	<i>389</i>	<i>5,170</i>	<i>1,305</i>	<i>52</i>	<i>262</i>
<i>Central-West (SD)</i>	<i>10</i>	<i>50</i>	<i>322</i>	<i>371</i>	<i>41</i>	<i>784</i>	<i>20</i>	<i>2</i>	<i>22</i>
Broadsound (S)	3	9	177	36	9	231	28	2	5
Mirani (S)	4	18	103	50	4	175	31	1	8
Pioneer (S) — Parts A and B	14	158	746	193	89	1,186	360	5	51
Sarina (S)	7	43	196	60	13	312	79	1	15
Whitsunday (S)	11	101	482	267	96	946	100	4	41
Balance	6	30	479	80	44	633	193	—	21
<i>Mackay (SD)</i>	<i>45</i>	<i>359</i>	<i>2,183</i>	<i>686</i>	<i>255</i>	<i>3,483</i>	<i>791</i>	<i>13</i>	<i>141</i>
Bowen (S)	11	131	537	158	19	845	155	6	32
Burdekin (S)	7	29	230	130	33	422	93	—	17
Charters Towers (C)	3	22	102	54	25	203	66	7	12
Dalrymple (S)	4	10	80	39	12	141	6	—	11
Hinchinbrook (S)	6	22	268	112	18	420	23	10	21
Thuringowa (C) — Parts A and B	4	17	199	74	10	300	120	3	12
Townsville City (SSD)	9	149	692	197	93	1,131	458	—	52
<i>Northern (SD)</i>	<i>44</i>	<i>380</i>	<i>2,108</i>	<i>764</i>	<i>210</i>	<i>3,462</i>	<i>921</i>	<i>26</i>	<i>157</i>
Atherton (S) and Eacham (S)	9	45	312	351	66	774	127	21	24
Cairns (C)	4	59	369	131	97	656	280	2	26
Cardwell (S)	12	96	433	243	73	845	102	11	45
Douglas (S)	11	55	545	223	70	893	106	2	54
Etheridge (S)	3	7	65	45	12	129	5	—	6
Herberton (S)	5	13	89	152	14	268	24	—	18
Johnstone (S)	13	83	459	296	45	883	121	4	34
Mareeba (S)	9	76	224	144	38	482	90	16	22
Mulgrave (S) — Parts A and B	19	234	955	304	203	1,696	450	32	75
Balance	7	26	193	480	14	713	66	1	21
<i>Far North (SD)</i>	<i>92</i>	<i>694</i>	<i>3,644</i>	<i>2,369</i>	<i>632</i>	<i>7,339</i>	<i>1,371</i>	<i>89</i>	<i>325</i>
Mount Isa (C)	9	65	589	134	18	806	311	—	26
Balance	14	36	433	389	40	898	35	5	37
<i>North-West (SD)</i>	<i>23</i>	<i>101</i>	<i>1,022</i>	<i>523</i>	<i>58</i>	<i>1,704</i>	<i>346</i>	<i>5</i>	<i>63</i>
<i>Queensland</i>									
Short-term parks	232	1,062	10,831	8,261	1,243	21,397	1,769	675	806
Long-term parks	397	4,763	21,424	5,162	2,308	33,657	14,659	497	1,458
Total	629	5,825	32,255	13,423	3,551	55,054	16,428	1,172	2,264
Albert (S) (a)	13	267	1,161	152	36	1,616	986	11	62
Beaudesert (S) (a)	5	82	129	132	63	406	156	—	28
Caboolture (S) (a)	13	189	1,214	62	49	1,514	846	147	53
Sunshine Coast Statistical District (b)	37	231	2,785	1,035	304	4,355	1,105	249	184

(a) Albert, Beaudesert and Caboolture Shires straddle the boundary line between Brisbane and Moreton Statistical Divisions. (b) Sunshine Coast Statistical District comprises the more urban coastal portions of Caloundra City and Maroochy and Noosa Shires.

## AND STATISTICAL LOCAL AREAS, QUEENSLAND, MARCH QUARTER 1994—continued

<i>Site nights occupied</i>				<i>Site occupancy rates (per cent)</i>				<i>Takings from accommodation (\$'000)</i>			
<i>Jan.</i>	<i>Feb.</i>	<i>Mar.</i>	<i>Mar. qtr</i>	<i>Jan.</i>	<i>Feb.</i>	<i>Mar.</i>	<i>Mar. qtr</i>	<i>Jan.</i>	<i>Feb.</i>	<i>Mar.</i>	<i>Mar. qtr</i>
2,929	2,566	3,022	8,517	19.0	18.5	19.7	19.1	25	24	25	73
8,269	5,866	7,469	21,604	32.7	25.7	29.6	29.5	116	65	95	275
10,191	9,564	10,696	30,451	36.9	38.3	38.7	37.9	90	83	93	266
9,808	8,415	9,693	27,916	69.8	66.3	69.0	68.5	88	76	89	253
12,648	8,557	9,318	30,523	46.5	34.8	34.2	38.6	142	84	92	318
11,226	9,577	10,483	31,286	40.8	38.6	38.1	39.2	130	116	137	383
5,551	5,117	4,961	15,629	23.9	24.4	21.4	23.2	44	42	38	124
60,622	49,662	55,642	165,926	37.8	34.3	34.7	35.7	636	488	567	1,691
1,457	1,087	1,619	4,163	6.0	5.0	6.7	5.9	23	19	29	71
1,301	1,267	1,135	3,703	18.2	19.6	15.8	17.8	12	10	10	32
1,095	1,005	1,055	3,155	20.2	20.5	19.4	20.0	5	5	5	15
14,184	12,047	13,446	39,677	38.6	36.3	36.6	37.2	148	117	128	393
2,936	2,750	3,084	8,770	30.4	31.5	31.9	31.2	31	29	35	95
12,372	6,918	8,603	27,893	42.2	26.1	29.3	32.8	143	91	109	343
7,502	6,444	7,180	21,126	38.2	36.4	36.6	37.1	73	65	70	208
39,390	30,431	34,503	104,324	36.5	31.2	32.0	33.3	412	318	356	1,086
5,653	5,755	6,786	18,194	21.6	24.3	25.9	23.9	58	54	70	182
3,200	2,743	3,253	9,196	24.5	23.2	24.9	24.2	29	23	28	81
2,630	2,379	2,543	7,552	41.8	41.9	40.4	41.3	30	29	29	88
358	277	435	1,070	8.2	7.0	10.0	8.4	4	3	5	12
2,603	1,634	1,809	6,046	20.0	13.9	13.9	16.0	22	12	13	47
4,079	3,658	4,164	11,901*	43.9	43.5	44.8	44.1	35	31	37	103
18,370	16,539	18,634	53,543	52.4	52.2	53.1	52.6	217	199	227	643
36,893	32,985	37,624	107,502	34.4	34.0	35.1	34.5	396	351	408	1,155
6,649	5,305	5,530	17,484	27.7	24.5	23.0	25.1	85	52	55	192
12,529	11,388	12,784	36,701	61.6	62.0	62.9	62.2	147	133	155	435
5,736	4,403	5,400	15,539	21.9	18.6	20.6	20.4	65	45	60	171
5,715	4,638	5,444	15,797	20.6	18.5	19.7	19.7	84	60	78	223
148	149	201	498	3.7	4.1	5.0	4.3	1	1	2	5
878	816	857	2,551	10.6	10.9	10.3	10.6	8	8	8	24
6,540	4,500	5,340	16,380	23.9	18.2	19.5	20.6	62	44	52	157
4,463	3,953	4,091	12,507	29.9	29.3	27.4	28.8	46	37	40	124
21,705	19,922	22,079	63,706	41.3	42.0	42.0	41.7	296	255	308	858
3,105	2,336	2,780	8,221	14.0	11.7	12.6	12.8	26	22	29	77
67,468	57,410	64,506	189,384	29.7	27.9	28.4	28.7	821	656	788	2,265
10,349	9,760	11,073	31,182	41.4	43.2	44.3	43.0	103	98	115	316
1,882	1,941	2,443	6,266	6.8	7.7	8.8	7.8	22	24	26	72
12,231	11,701	13,516	37,448	23.2	24.5	25.6	24.4	124	122	141	387
232,867	136,659	157,901	527,427	35.1	22.9	23.9	27.5	2,890	1,504	1,891	6,285
566,409	493,528	547,618	1,607,555	54.3	52.4	52.5	53.1	5,641	4,673	5,279	15,594
799,276	630,187	705,519	2,134,982	46.8	41.0	41.4	43.1	8,531	6,178	7,170	21,878
35,191	31,194	34,973	101,358	70.2	68.9	69.8	69.7	357	305	376	1,038
6,585	5,139	5,873	17,597	52.3	45.2	46.7	48.2	71	55	62	188
37,264	30,754	33,627	101,645	79.4	72.5	71.6	74.6	368	276	301	945
98,953	56,031	64,678	219,662	73.3	45.9	47.9	56.0	1,178	604	764	2,546

TABLE 12 — VISITOR HOSTELS BY STATISTICAL DIVISION, QUEENSLAND

<i>Particulars</i>	<i>Brisbane (SD)</i>	<i>Moreton (SD)</i>	<i>Wide Bay- Burnett (SD)</i>	<i>Mackay (SD)</i>	<i>Northern (SD)</i>	<i>Far North (SD)</i>	<i>Balance of State</i>	<i>Queensland</i>
ESTABLISHMENTS, CAPACITY AND EMPLOYMENT								
<i>March quarter 1993—</i>								
Establishments	17	17	8	14	18	38	9	121
Bed spaces	776	924	436	863	1,310	3,218	333	7,860
Employment (persons)	44	50	31	74	78	231	18	526
<i>March quarter 1994—</i>								
Establishments	16	18	10	13	18	38	9	122
Bed spaces	776	1,143	537	929	1,272	3,193	383	8,233
Employment (persons)	42	72	29	90	80	218	19	550
GUEST NIGHTS								
<i>March quarter 1993</i>	<i>32,551</i>	<i>51,626</i>	<i>24,031</i>	<i>36,374</i>	<i>46,213</i>	<i>116,939</i>	<i>10,357</i>	<i>318,291</i>
<i>1994—</i>								
January	14,321	25,229	8,126	15,157	12,973	46,081	4,387	126,274
February	12,087	15,992	6,942	12,457	12,252	39,301	3,663	102,694
March	12,258	16,857	7,446	12,651	13,498	43,552	4,091	110,353
<i>March quarter 1994</i>	<i>38,666</i>	<i>58,078</i>	<i>22,514</i>	<i>40,265</i>	<i>38,723</i>	<i>128,934</i>	<i>12,141</i>	<i>339,321</i>
BED OCCUPANCY RATES (per cent)								
<i>March quarter 1993</i>	<i>49.0</i>	<i>62.1</i>	<i>61.2</i>	<i>47.1</i>	<i>39.2</i>	<i>40.4</i>	<i>34.6</i>	<i>45.2</i>
<i>1994—</i>								
January	59.5	71.2	60.8	52.6	32.9	46.6	36.9	50.1
February	55.6	50.0	55.7	47.9	34.4	44.0	34.2	45.1
March	51.0	47.6	46.7	45.9	34.2	44.0	34.5	43.6
<i>March quarter 1994</i>	<i>55.4</i>	<i>56.5</i>	<i>53.9</i>	<i>48.9</i>	<i>33.8</i>	<i>44.9</i>	<i>35.2</i>	<i>46.3</i>
GUEST ARRIVALS								
<i>March quarter 1993</i>	<i>11,660</i>	<i>19,936</i>	<i>13,361</i>	<i>10,059</i>	<i>20,281</i>	<i>36,394</i>	<i>5,797</i>	<i>117,488</i>
<i>1994—</i>								
January	4,981	9,405	3,395	9,059	5,488	15,150	2,790	50,268
February	3,813	6,742	3,264	7,345	5,205	12,268	2,146	40,783
March	4,241	7,006	3,184	7,596	5,807	14,157	2,745	44,736
<i>March quarter 1994</i>	<i>13,035</i>	<i>23,153</i>	<i>9,843</i>	<i>24,000</i>	<i>16,500</i>	<i>41,575</i>	<i>7,681</i>	<i>135,787</i>
AVERAGE LENGTH OF STAY (days)								
<i>March quarter 1993</i>	<i>2.8</i>	<i>2.6</i>	<i>1.8</i>	<i>3.6</i>	<i>2.3</i>	<i>3.2</i>	<i>1.8</i>	<i>2.7</i>
<i>1994—</i>								
January	2.9	2.7	2.4	1.7	2.4	3.0	1.6	2.5
February	3.2	2.4	2.1	1.7	2.4	3.2	1.7	2.5
March	2.9	2.4	2.3	1.7	2.3	3.1	1.5	2.5
<i>March quarter 1994</i>	<i>3.0</i>	<i>2.5</i>	<i>2.3</i>	<i>1.7</i>	<i>2.3</i>	<i>3.1</i>	<i>1.6</i>	<i>2.5</i>
TAKINGS FROM ACCOMMODATION (\$'000)								
<i>March quarter 1993</i>	<i>384</i>	<i>605</i>	<i>263</i>	<i>403</i>	<i>505</i>	<i>1,354</i>	<i>121</i>	<i>3,635</i>
<i>1994—</i>								
January	162	304	77	178	132	526	54	1,432
February	135	205	70	146	123	446	42	1,167
March	146	218	77	149	135	498	48	1,272
<i>March quarter 1994</i>	<i>444</i>	<i>727</i>	<i>224</i>	<i>473</i>	<i>390</i>	<i>1,470</i>	<i>144</i>	<i>3,871</i>

## EXPLANATORY NOTES

- \*\*\*\*\*
- INTRODUCTION**                    **1**    This publication contains data for Queensland from a quarterly survey of tourist accommodation establishments. The period covered by the latest survey is the 3 months ended 31 March 1994.
- SCOPE**                                **2**    Tourist accommodation establishments currently included in the survey comprise two groups:
- Establishments which provide predominantly short-term accommodation (i.e. for periods of less than 2 months) to the general public. These include:
    - Hotels, motels and guest houses, with facilities* being hotels licensed to operate a public bar and motels, private hotels and guest houses, all of which provide a bath (or shower) and toilet in most guest rooms and have breakfast available for guests.
    - NOTE: From December quarter 1993, hotel, motel and guest house establishments with fewer than five rooms have been formally excluded from the scope of this statistical collection. This change in scope resulted in the exclusion of 21 establishments which in the September quarter 1993 Survey aggregates represented 1.9 per cent of hotel, motel and guest house establishments but accounted for only 0.2 per cent of accommodation capacity and less than 0.1 percent of occupancy and takings.
    - Holiday flats, units and houses* (excluding establishments predominantly operated on a time share basis) which are operated by owners or managers who have sole letting rights to at least five flats, units or houses or by real estate agents for short-term letting. They are mainly self-contained in terms of cooking, bath (or shower) and toilet facilities and do not have breakfast available for guests. Data for holiday flats, units and houses include short-term owner occupation as well as paying guest occupation.
    - Visitor hostels* which provide accommodation to visitors on a bed basis (rather than by the room). This category does not include establishments providing charity type accommodation (e.g. Salvation Army hostels) nor hotels, motels and guest houses without in-room facilities which provide accommodation on a per room basis.
  - *Caravan parks* providing either predominantly short-term (i.e. for periods of less than 2 months) or predominantly long-term (i.e. for periods of 2 months or more) accommodation to the general public and which provide powered sites for caravans and toilet, shower and laundry facilities for guests.
- 3**    Data collected and published for each type of establishment (other than holiday flats, units and houses) include both long-term and short-term guests at these establishments.
- 4**    Establishments providing more than one type of accommodation (e.g. a motel with attached caravan park) are treated as two or more separate establishments. However, self-contained units, flats, cabins, etc. attached to hotels, motels or to caravan parks are included in the capacity for those establishments and not treated as separate holiday flat, unit or house establishments.
- DEFINITIONS**
- 5**    *Number of establishments.* For hotels, motels and guest houses, caravan parks and visitor hostels, the number of establishments within the scope of the survey which operated for any part of the survey period, or which closed temporarily for the quarter for seasonal reasons.
- 6**    *Number of letting entities.* For holiday flats, units and houses, the number of owners, managers or real estate agents within the scope of the survey who operated for any part of the survey period.
- 7**    Capacity in terms of *Guest rooms, Bed spaces, Holiday units or Caravan park sites, etc.* is the maximum number available to accommodate paying guests during the survey period. Capacity closed temporarily for seasonal reasons is included.
- 8**    *Bed spaces.* Three-quarter beds are counted as one bed space; double beds as two bed spaces. Cots are excluded.
- 9**    *Total caravan park capacity* comprises *On-site vans, Other powered sites, Unpowered sites and Cabins, etc.*
- \*\*\*\*\*

## EXPLANATORY NOTES --continued

\*\*\*\*\*

### DEFINITIONS --continued

**10** *Room nights available.* The number of guest rooms available multiplied by the number of days for which they were available during the survey period. Includes operating periods only for establishments closing (other than for seasonal reasons) or opening during the survey period.

**11** Occupancy in terms of *Room nights, Unit nights* or *Site nights occupied* refers to the total number of nights each guest room, holiday unit or caravan park site, etc. was occupied during the survey period.

NOTE: From September quarter 1992, caravan park sites, etc. permanently reserved for 2 months or more at the end of the survey period but only casually occupied by their tenants have been recorded continuously as *Site nights occupied* irrespective of whether the tenants of individual sites were in residence on any particular night. (See also paragraph 14 below). Previously, usage of these sites was recorded as *Site nights occupied* only when their tenants were in the park. Total site occupancy rates from September quarter 1992 are therefore not comparable with those from previous quarters.

**12** Occupancy in terms of *Guest nights* refers to the total number of nights each paying guest stayed during the survey period.

**13** *Sites occupied by long-term guests.* The total number of sites, etc. occupied at the end of the survey period by guests who have stayed continuously for 2 months or more.

**14** *Other sites permanently reserved.* The total number of powered and unpowered sites, on-site vans and cabins, etc. continuously let for 2 months or more by the end of the survey period to tenants who occupy the sites only on a casual or sporadic basis. Separate data for this item are available only from September quarter 1992.

**15** *Occupancy rates* represent occupancy expressed as a percentage of total capacity available during the survey period – e.g.

$$\text{Room occupancy rate (\%)} \text{ for the period} = \frac{\text{Room nights occupied}}{(\text{Guest rooms}) \times (\text{No. of days in the period})} \times 100$$

providing that, for establishments closing (other than for seasonal reasons) or opening during the period, the denominator of the above expression includes only operating periods.

**16** *Guest arrivals.* The total number of paying guests counted only on the first night they stayed at the accommodation establishment.

**17** *Unit lettings.* The total number of times a holiday flat, unit or house was occupied by a new tenant, counted only on the first night it was occupied by the new tenant.

**18** *Average length of stay* is expressed in number of days and is calculated:

- for hotels, motels and guest houses and for visitor hostels, by dividing *Guest nights* by *Guest arrivals* and
- for holiday flats, units and houses, by dividing *Unit nights occupied* by *Unit lettings*.

**19** *Takings from accommodation.* Revenue received from the provision of accommodation. Takings from meals are excluded. Takings from accommodation for each month generally represent the takings received during that month. Where payments are received in advance of, or after, the provision of accommodation to guests, the monthly figure for takings from accommodation may not necessarily bear a direct relationship to the number of guests accommodated during the month. Rental and storage fees paid to caravan parks for the keeping of private vans in parks are included in the takings of the month they are received.

**20** *Star grading.* The grading of hotels and motels with facilities based on the classification system used by members of the Australian Automobile Association (AAA). The gradings are allocated according to a points system based on the amenities and facilities available to guests. Details of the grading scheme are contained in the RACV-RAASA members' publication *Accommodation Australia*, or the individual tour guides produced by members of the AAA. For the purpose of classifying establishments to a star grading in this publication, 'half' star gradings are ignored (e.g. a two and a half star grading has been shown as two star).

\*\*\*\*\*



EXPLANATORY NOTES—*continued*

- \*\*\*\*\*
- 21** *Employment.* The number of persons working at accommodation establishments at the end of the survey period (including working proprietors and those working on other than accommodation activities).
- AUSTRALIAN STANDARD GEOGRAPHICAL CLASSIFICATION**
- 22.** Statistics presented in this publication have been classified according to the Australian Standard Geographical Classification (ASGC), Edition 2.3. This classification incorporates a number of hierarchic structures of geographic areas. The appropriate spatial units of the main structure of the ASGC used in this publication are defined as follows.
- Statistical Local Areas (SLAs)* are the smallest types of spatial units in the ASGC for which tourist accommodation data are presented. They correspond either to legal local government areas (LGAs) as defined under the *Local Government Act 1936* or to suburbs in certain urban LGAs. Some LGAs are split into two or more parts, with each part forming a separate SLA. In all instances, LGA data can be derived by aggregating SLAs. The unincorporated area of Queensland also forms a SLA. In aggregate, SLAs cover the whole of the State without gaps or overlaps.
- Statistical Subdivisions (SSDs)* consist of one or more SLAs and form the intermediate size spatial unit for the presentation of regional data.
- Statistical Divisions (SDs)*, which consist of one or more SSDs, are designed to be relatively homogeneous regions characterised by identifiable social and economic units within the region, under the unifying influence of one or more major towns or cities. The Brisbane Statistical Division comprises the Cities of Brisbane, Ipswich, Logan and Redcliffe, the Shires of Pine Rivers and Redland and parts of the Shires of Albert, Beaudesert, Caboolture, and Moreton.
- Statistical districts* have been defined around selected urban areas to provide comparable statistics over a period of time. These districts, which are intended to contain the anticipated urban spread for at least 20 years, are generally defined as having a population of 25,000 or more and experiencing urban growth beyond the LGA boundaries.
- For more detailed information, refer to the ASGC (1216.0).
- UNPUBLISHED STATISTICS**
- 23** The ABS may make available on request certain unpublished tourist accommodation statistics. In particular, small geographical area and other tabulations are available for various accommodation types in a time series format. A charge may be made for this information.
- RELATED PUBLICATIONS**
- 24** Publications for Australia and each State and Territory are released by the respective offices of the ABS. Tourist accommodation statistics for past quarters are available on request. Other ABS publications which may be of interest include:
- Directory of Tourism Statistics, 1991* (1130.0) (irregular)
- Overseas Arrivals and Departures, Australia* (3401.0) (monthly)
- Tourism Indicators Australia* (8634.0) (quarterly)
- Tourist Accommodation, Australia* (8635.0) (quarterly)
- 25** Current publications produced by the ABS are listed in the *Catalogue of Publications and Products* (1101.0). The ABS also issues the *Publications Advice* (1105.0) on Tuesdays and Fridays which lists publications to be released in the next few days. Both the *Catalogue* and *Publications Advice* are available from any ABS office.
- SYMBOLS AND OTHER USAGES**
- n.p. not available for publication but included in totals where applicable
- .. not applicable
- nil or rounded to zero
- (C) City
- (S) Shire
- (T) Town
- 26** Where figures have been rounded, discrepancies may occur between totals and the sums of the component items.

313 Adelaide Street  
BRISBANE Q 4000  
23 June 1994

**R. A. CROCKETT**  
Deputy Commonwealth Statistician

## TOURIST ACCOMMODATION, QUEENSLAND: TIME SERIES STATISTICS AVAILABLE

*****						
Brisbane Statistical Division	HM	IU	CP	Darling Downs Statistical Division	HM	CP
Brisbane City (SSD)	HM	IU	CP	Chinchilla (S)	HM	
Ascot	HM			Dalby (T)	HM	
Aspley	IIM		CP	Goondiwindi (T)	HM	CP
Brisbane City Core (a)	HM	HU		Inglewood (S)	HM	CP
City - Inner	HM			Jondaryan (S)	HM	
City - Remainder	HM			Murilla (S)	HM	CP
Kangaroo Point	HM			Stanthorpe (S)	HM	CP
Spring Hill	HM	IU		Taroom (S)	HM	
Brisbane City Core (a)				Toowoomba (C)	HM	CP
- establishments with more than 50 rooms	HM			Wambo (S)		CP
Eight Mile Plains			CP	Warwick (C)	HM	CP
Hamilton	HM					
Caboolture (S) Part A (b)			CP	South-West Statistical Division	HM	CP
Ipswich (C)	IIM		CP	Balonne (S)	HM	
Logan City (SSD)	HM		CP	Murweh (S)	IIM	CP
Redcliffe City (SSD)	HM		CP	Roma (T)	HM	CP
Redland Shire (SSD)	HM		CP			
North Stradbroke and Coochiemudlo Islands		IU		Fitzroy Statistical Division	HM	IU CP
Moreton Statistical Division	HM	IU	CP	Banana (S)		CP
Beaudesert (S) Part B (b)			CP	Banana (S), Fitzroy (S) and Mt Morgan (S)	HM	
Boonah (S)	HM			Bauhinia (S)	IIM	
Caboolture (S) - Part B (b)			CP	Calliope (S) - Parts A and B	IIM	CP
Caloundra (C) - Parts A and B	IIM	HU	CP	Duaranga (S)	IIM	
Esk (S)	IIM		CP	Emerald (S)	HM	CP
Gatton (S)			CP	Gladstone (C)	HM	CP
Gold Coast City (SSD)	HM	HU	CP	Livingstone (S)	HM	CP
Biggera Waters		HU		Rockhampton (C)	HM	CP
Bilinga	HM					
Broadbeach		IU		Central-West Statistical Division	IIM	CP
Burleigh Heads	HM	HU		Barcaldine (S)	HM	
Coolangatta	HM	HU		Longreach (S)	IIM	
Coomabah			CP			
Currumbin	HM	IU		Mackay Statistical Division	HM	IU CP
Labrador	HM	IU	CP	Belyando (S)	HM	
Main Beach-Broadwater		HU		Broadsound (S)		CP
Mermaid Beach	HM	HU		Mackay (C)	IIM	
Miami	HM	IU		Mirani (S)		CP
Palm Beach	HM	IU		Pioneer (S) - Parts A and B	HM	CP
Southport	IIM			Sarina (S)	HM	CP
Surfers Paradise	HM	IU		Whitsunday (S)	HM	IU CP
Tugun		IU				
Gold Coast City (SSD) by establishment size				Northern Statistical Division	HM	HU CP
(number of rooms)				Bowen (S)	HM	CP
1-9, 10-15, 16-25, 26-50, 51-100, 101 & over	HM			Burdekin (S)	IIM	CP
Maroochy (S) - Parts A and B	HM	IU	CP	Charters Towers (C)	HM	CP
Noosa (S) - Parts A and B	IIM	IU	CP	Dalrymple (S)		CP
Sunshine Coast Statistical District (c)	HM	IU	CP	Hinchinbrook (S)	IIM	CP
				Thuringowa (C) - Parts A and B		CP
Wide Bay-Burnett Statistical Division	HM	IU	CP	Townsville City (SSD)	HM	IU CP
Hundaberg (C)	HM		CP	City	HM	
Gooburrum (S) - Parts A and B			CP	Hermit Park	HM	
Gympie (C)	IIM			Magnetic Island		HU
Gympie (C) and Widgee (S)	HM		CP	North Ward-Castle Hill	IIM	HU
Hervey Bay (C)	HM	HU	CP	Rosslea	HM	
Isis (S)	HM		CP			
Kingaroy (S)	HM					
Kolan (S)	HM					
Maryborough (C)	HM		CP			
Miriam Vale (S)	HM		CP			
Nanango (S)	HM		CP			
Widgee (S)	HM					
Woongarra (S) - Parts A and B	HM	IU	CP			

## TOURIST ACCOMMODATION, QUEENSLAND: TIME SERIES STATISTICS AVAILABLE—continued

*****				
Far North Statistical Division	HM	IU	CP	Queensland regions by star grading
Atherton (S)	IIM			Brisbane City (SSD)
Atherton (S), Cardwell (S), Douglas (S), Eacham (S), Johnstone (S) and Mulgrave (S)	HM			1-2 and ungraded, 3, 4-5
Atherton (S) and Eacham (S)	HM		CP	Brisbane Statistical Division
Cairns (C)	HM	IU	CP	1-2, 3, 4-5, Ungraded
Cardwell (S)	HM		CP	Gold Coast City (SSD)
Cook (S) (excl. Weipa)	HM			1-2, 3, 4-5, Ungraded
Douglas (S)	IIM	IU	CP	Sunshine Coast Statistical District (c)
Eacham (S)	HM			1-2, 3, 4-5, Ungraded
Etheridge (S)			CP	Bundaberg (C), Hervey Bay (C), Isis (S), Maryborough (C) and Woongarra (S)
Herberton (S)	HM		CP	1-2, 3-4, Ungraded
Johnstone (S)	HM		CP	Stanthorpe (S), Toowoomba (C) and Warwick (C)
Mareeba (S)	HM		CP	1-2, 3-4, Ungraded
Mulgrave (S) - Parts A and B	HM	IU	CP	Calliope (S) and Gladstone (C)
North-West Statistical Division	HM		CP	1-2, 3-4 & Ungraded
Carpentaria (S)	HM			Livingstone (S) and Rockhampton (C)
Cloncurry (S)	HM			1-2, 3-4 & Ungraded
Flinders (S)	HM			Mackay (C), Pioneer (S) and Whitsunday (S)
Mount Isa (C)	HM		CP	1-2, 3-5, Ungraded
Total Queensland	HM	IU	CP	Townsville (C)
By establishment size (number of rooms)				1-2 and ungraded, 3-5
1-9, 10-15, 16-25, 26-50, 51-100, 101 & over	HM			Atherton (S), Cardwell (S), Douglas (S), Eacham (S), Johnstone (S) and Mulgrave (S)
By star grading				1-2, 3, 4-5, Ungraded
1, 2, 3, 4, 5, Ungraded	HM			Cairns (C)
				1-2, 3, 4-5, Ungraded
Other geographic aggregations				
Albert (S) (b)	IIM		CP	
Beaudesert (S) (b)	IIM		CP	
Caboolture (S) (b)	IIM		CP	
Great Barrier Reef islands (d)	HM			
Pioneer (S) and Whitsunday (S)	IIM			
Balance	IIM			

NOTE: Establishment type codes are used above to denote the following:

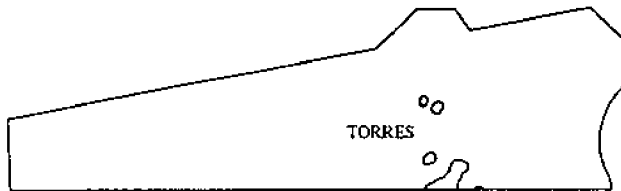
IIM - Licensed hotels, motels and guest houses with facilities

IU - Holiday flats, units and houses

CP - Caravan parks (total short-term and long-term)

(a) Brisbane City Core comprises the suburbs of Bowen Hills, City, Dutton Park, Fortitude Valley, Herston, Highgate Hill, Kangaroo Point, Kelvin Grove, Milton, New Farm, Newstead, Paddington, Red Hill, South Brisbane, Spring Hill, West End and Woollongabba. (b) Albert, Beaudesert, Caboolture and Moreton Shires straddle the boundary line between Brisbane and Moreton Statistical Divisions. (c) Sunshine Coast Statistical District comprises the more urban coastal portions of Caloundra City and Maroochy and Noosa Shires. (d) Great Barrier Reef island establishments are those on coastal islands from Lady Elliot in the south to Lizard in the north.

# QUEENSLAND LOCAL GOVERNMENT AREAS

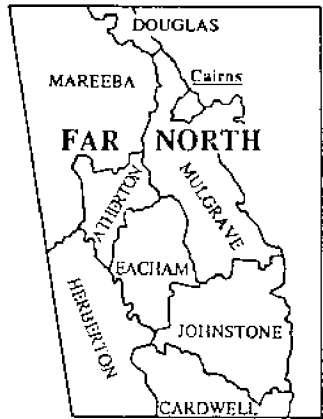


STATISTICAL DIVISIONS .... MACKAY

CITIES ..... Cairns

TOWNS ..... Roma

SHIRES ..... TAMBO



SOUTH-EASTERN QUEENSLAND


LOCAL GOVERNMENT AREAS

STATISTICAL DIVISIONS ..... MORETON

CITIES ..... Ipswich

TOWNS ..... Dalby

SHIRES ..... WONDAL






## *For more information ...*

The ABS publishes a wide range of statistics and other information on Australia's economic and social conditions. Details of what is available in various publications and other products can be found in the *ABS Catalogue of Publications and Products* available at all ABS offices (see below for contact details).

### **Information Consultancy Service**

Information tailored to special needs of clients can be obtained from the Information Consultancy Service available at ABS offices (see Information Inquiries below for contact details).

### **National Dial-a-Statistic Line**

0055 26 400

This number gives you 24 hour access, 365 days a year for a range of statistics.

### **Electronic Data Services**

A wide range of ABS data are available on electronic media. Selections for most frequently requested statistics are available, updated daily, on DISCOVERY (Key \*656#). The ABS PC TELESTATS service delivers major economic indicator main features ready to download into personal computers on the day of release. The PC AUSSTATS service enables on-line access to a data base of thousands of up-to-date time series. Selected datasets are also available on diskette or CD-ROM. For more details on electronic data services available, contact Information Services in any of the ABS offices (see information Inquiries below for contact details).

### **Bookshops and Subscriptions**

There are over 500 titles of various publications available from ABS bookshop in all ABS offices (see below Bookshop Sales for contact details). The ABS provides a subscription service through which nominated publications are provided by mail on a regular basis at no additional cost (telephone Publications Subscription Service toll free on 008 02 0608 Australia wide).

## *Sales and Inquiries*

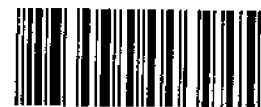
<b>Regional Offices</b>	<b>Information Inquiries</b>	<b>Bookshop Sales</b>
SYDNEY (02)	268 4611	268 4620
MELBOURNE (03)	615 7000	615 7829
BRISBANE (07)	222 6351	222 6350
PERTH (09)	323 5140	323 5307
ADELAIDE (08)	237 7100	237 7582
HOBART (002)	205 800	205 800
CANBERRA (06)	207 0315	207 0315
DARWIN (089)	432 111	432 111
<b>National Office</b>		
ACT (06)	252 6007	008 020 608

Information Services, ABS, GPO Box 9817, Brisbane Q 4001



© 1998 by [unreadable]

Recommended retail price: \$25.00



2863530003945

ISSN 0725-394X

FACTS ON ENVIRONMENT